

# ERIC and the WorldCat Registry



**Lawrence Henry**  
ERIC Program Manager

**Joanna White**  
WorldCat Registry Product Manager

# ERIC and the WorldCat Registry

**Lawrence Henry**  
ERIC Program Manager

[www.eric.ed.gov](http://www.eric.ed.gov)



The ERIC Collection contains over 1.2 million bibliographic records relevant to the field of education

- 597 Journals
- 502 Non-journal sources
  - Research reports
  - Conference papers
  - Government documents
  - Issue papers
  - Curriculum materials
- Books in education



# Need for Full-text

- Full-text documents are in high demand
- ERIC users want more full-text
- ERIC Journal sources primarily have bibliographic records
- Non-journal sources
  - 1993 - present – most are available in full-text
  - 1966 - 1992 – most are available in microfiche only



# Expanding Full Text Access

- More than 200,000 full-text materials already in ERIC
- Links from ERIC search results to commercial publishers
- Microfiche Digitization Project undertaken to convert microfiche records to digital format
- Researched approaches for expanding full-text access
  - Offered Link to My Library beta
  - Learned that maintaining our own list of resolvers is cumbersome
  - Found that a high number of ERIC users work from sites that offer electronic holdings
  - Investigated OCLC's link to holdings approach



# ERIC Adds *Find in a Library* Feature

Individuals who search ERIC at [www.eric.ed.gov](http://www.eric.ed.gov) see a *Find in a Library* link in the search results. ERIC is partnering with OCLC to leverage the OpenURL Gateway and WorldCat to provide users with a link from ERIC records to electronic and print resources available in libraries. The feature dramatically streamlines the process of obtaining full text.

The *Find in a Library* feature offers two linking paths: OpenURL access to library holdings and WorldCat. For users associated with one of the 1,100 libraries registered with the OCLC OpenURL Gateway, selecting Find in a Library will lead to a search of the library's electronic holdings and seamless access to available full text. If no full text is available users may choose to link to WorldCat.

March 19, 2007 , *ERIC.gov News*



# Find in a Library

- ERIC uses OCLC's OpenURL registry to provide seamless access to electronic full-text or print holdings
- Leverages existing holdings data from over 1600 institutions and over 10,000 WorldCat libraries
- Greatly expands potential for full-text through ERIC
  - Any record with an ISSN or ISBN is linked to holdings
- Users not associated with a participating institution are redirected automatically to print holdings through WorldCat



## Basic Search


Basic Search

Advanced Search

Search Term(s):

Search In:

For additional search criteria, go to [Advanced Search](#).

 [Search Help](#)

### Search Tips


- Use quotation marks around a phrase to find an exact match.
  - For an exact match of an author name, use the format "Last name, First name"
- [» More Search Tips](#)




# Find in a Library


**Search Results**

Sort By: [Relevance](#) | [Publication Date](#) | [Title](#) | [Author](#) | [Source](#)  
Show: 10 | [20](#) results per page

 [Help reading these results](#)

Use My Clipboard to print, email, export, and save records  
 0 items in My Clipboard

Now showing results **1-10** of **13**. [Next 10 >>](#)

1. The **Praeger Handbook** of American High Schools. Volume 3 (ED495104)  [Add](#)

**Author(s):** [Borman, Kathryn M., Ed.](#); [Cahill, Spencer E., Ed.](#); [Cotner, Bridget A., Ed.](#)      **Pub Date:** 2007-00-00  
**Source:** **Praeger**      **Pub Type(s):** Books; Guides - General  
**Peer-Reviewed:** No

**Descriptors:**  
[High Schools](#); [Court Litigation](#); [School Segregation](#); [Compulsory Education](#); [School Desegregation](#); [Constitutional Law](#); [Freedom of Speech](#); [Educational Equity \(Finance\)](#); [Bilingual Education](#); [Immigrants](#); [Educational Vouchers](#); [School Choice](#); [State Church Separation](#); [State Courts](#); [School Law](#)

**Abstract:**  
The **Praeger Handbook** of American High Schools contains entries that explore the topic of secondary schools in the United States. Entries are arranged alphabetically and cover topics as varied as assessment to the history of the American high school, from attention-deficit/hyperactivity disorder to gay and straight student alliances. [Show Full Abstract](#)

**Full-Text Availability Options:**  
[Not available from ERIC](#) | [Find in a Library](#) | [Publisher's Web Site](#)



# Link to WorldCat

You are not signed into WorldCat ([Sign In](#) or [Register](#))

[My WorldCat Account](#)

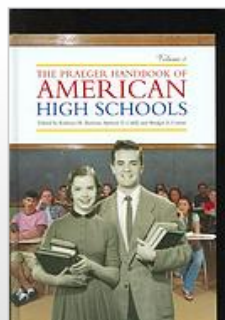


[Home](#) [Help](#) [Feedback](#)

Search for items:

[Search](#)

[Advanced Search](#)



## The Praeger handbook of American high schools by [Kathryn M Borman](#); [Spencer Cahill](#); [Bridget A Cotner](#)

Language: English Type: Book Internet Resource

Publisher: Westport, Conn. : Praeger, 2007.

ISBN: 0313325170 9780313325175 0313334331 9780313334337 031333434X

9780313334344 0313339813 9780313339813 0313339821 9780313339820 | OCLC: 71789956 | [Cite this Item](#)

Subjects: [High schools -- United States -- Handbooks, manuals, etc.](#) | [Education, Secondary -- United States -- Handbooks, manuals, etc.](#)

More Info: [Table of contents only](#)

[Review this Item](#)

[Search my library](#)

[Buy from Amazon.com](#)

[Add This Page to Favorites](#)

Link to this Page: <http://worldcat.org/oclc/71789956>

Services from ONLINE COMPUTER LIBR CTR, INC for this item: [Search the catalog at your library](#) | [Request item](#) | [Order Item from CISTI](#) | [OCLC FirstSearch](#)

**Libraries**

Details

Subjects

Reviews

Enter Location Information:

[Go](#)

Enter postal code, state, province or country

Displaying libraries 1-10 out of 51

95988 Willows, CA

<< First < Prev 1 2 3 [Next](#) > Last >>

1. [University of California, Santa Cruz](#) Santa Cruz, CA 95064 United States

175 miles

[Book](#)

Services: [Library Information](#)

## Buy This Item



[The Praeger Handbook  
of American Hig...](#)

Kathryn M. Borman,....

[Best Price \\$240.00](#)

[www.eric.ed.gov](http://www.eric.ed.gov)

# Full-text from Georgia Tech

Find in a Library powered by  WorldCat

Search for items in libraries:

Search

Title: Reading and Writing Quarterly By: Rachel Karchmer ISSN: 1057-3569 Volume: 20 Issue: 3

Remove frames

**Georgia  
Tech**



**Library and  
Information Center**

**Title:** Creating Connections: Using the Internet to Support Struggling Readers Background Knowledge. Issues in Technology

**Source:** Reading & writing quarterly [1057-3569] Karchmer yr:2004 vol:20 iss:3

[Full Text Options](#)

#### OnLine

Article is available from **EBSCOhost Academic Search Complete** 

Year:  Volume:  Issue:  Start Page:



Print

www.eric.ed.gov

# Full-text from Georgia Tech

**EBSCO** Research  
**HOST** Databases

[Sign In](#) | [Folder](#) | [Preferences](#) | [New Features!](#) | [Ask-A-Librarian](#) | [Help](#) | [Exit](#)

Basic  
Search

Advanced  
Search

Visual  
Search

Choose  
Databases



New Search

[Keyword](#) | [Subjects](#) | [Publications](#) | [Dictionary](#) | [Indexes](#)

◀ 1 of 1 ▶ [Result List](#) | [Refine Search](#) | [Print](#) | [E-mail](#) | [Save](#) | [Export](#) | [Add to folder](#)

View: [Citation](#) | [PDF Full Text](#) (71K)

**Title:** **CREATING CONNECTIONS: USING THE INTERNET TO SUPPORT STRUGGLING READERS' BACKGROUND KNOWLEDGE.**

[Find  
More  
Like  
This](#)

**Authors:** [Karchmer, Rachel A.](#)

**Source:** [Reading & Writing Quarterly](#); Jul-Sep2004, Vol. 20 Issue 3, p331-335, 5p

**Document Type:** Article

**Subject Terms:** [INTERNET in education](#)  
[SLOW learning children](#)  
[READERS](#)  
[LEARNING](#)  
[EDUCATION](#)  
[EDUCATIONAL technology](#)

**Abstract:** Discusses the use of the Internet to support the background knowledge of struggling readers. Account of reasons why some students do not use the Internet in school; Importance of the preparation of all students to use the technology; Role of background knowledge in one's ability to learn.

**ISSN:** 1057-3569

www.eric.ed.gov

# Implementation Details

- Find in a Library functionality was implemented on ERIC Website on March 18, 2007.
- Search results for any ERIC record with an ISSN or ISBN have a Find in a Library link.
- For ISBN records, the nearest physical library with a copy of the book/item is located based on zip code of the user.
  - URL: <http://worldcat.org/isbn/9781412921121>
- For ISSN records, the ISSN plus title, author, publication date, volume, issue number and start page are used to lookup availability of the article.
  - URL: <http://worldcatlibraries.org/registry/gateway/?issn=0161-956X&aulast=Payne&aufirst=Brandyn&date=2008&atitle=Compulsion,+Craft,+or+C+ommodity?+Education+Services+Trade+in+the+Larger+Context&title=Peabody+Jo+urnal+of+Education&volume=8&issue=1&spage=133>
- If the IP of the user is associated with an OpenURL resolver, the user is directed to a results page that points to their library holdings.
- If the IP of the user is not associated with an OpenURL resolver, the user is directed to an WorldCat query to determine nearest physical copy based on the zip code of the user.



# Indicators of Success

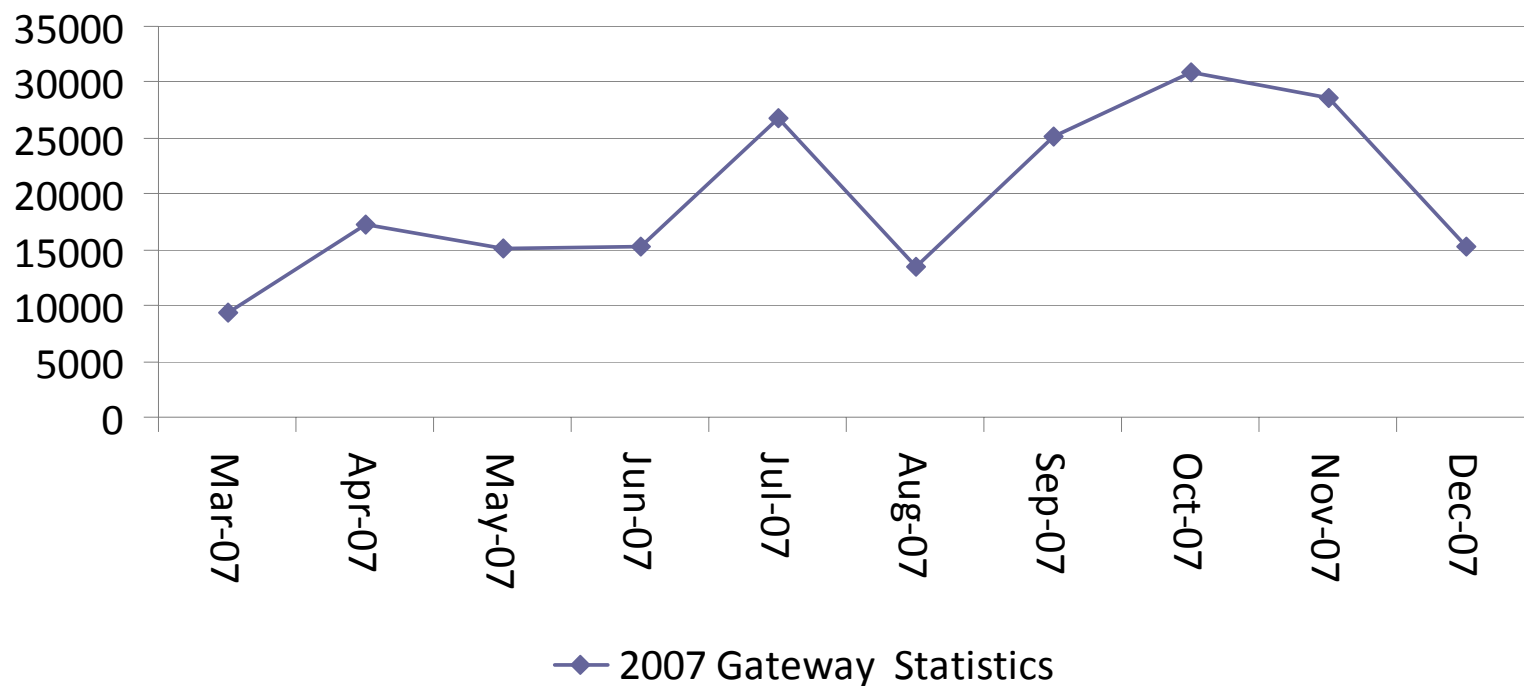
- **Comments and queries pertaining to full-text have declined to fewer than 30 a month (21 calls, 5 email messages related to full-text in February 2008)**
- **Total call center requests have dropped by 40%**
- **More than 9,000 referrals from ERIC to OCLC in March 2007 after Find in a Library was introduced**
- **Referrals have increased to over 28,000 per month on average during the fall semester (September – November) 2007**





# Referrals from ERIC

## 2007 OpenURL Gateway Referrals from ERIC



ER&L Conference  
March 2008

# WorldCat Registry and ERIC: Library Perspective

Joanna White

WorldCat Registry Product Manager



## Current state

“closed” registries of essentially the same library data  
inefficient, costly, libraries asked to update each vendor  
separately

## What we want to do

Centralize and decrease time spent on redundant tasks

Put library services closer to web users

Develop web services for library partners and vendors

# WorldCat Registry

[www.worldcat.org/registry/institutions](http://www.worldcat.org/registry/institutions)



A global directory of libraries, their locations, contacts, and the services they provide

Free for all libraries to maintain and share with partners

Pre-populated with data we already have, augmented by libraries and partners

Centralized data essential for delivering content and services more efficiently on the Web

The screenshot shows the WorldCat Registry homepage. At the top, there is a navigation bar with links for 'Registry Home', 'About', 'FAQ', 'Get E-mail Updates', and 'Feedback'. Below this is a main heading: 'A free service for all libraries and consortia'. The central content area is divided into two columns. The left column features a large image of people in a library hallway and text stating: 'One profile, one place where data about your institution and its services can be maintained, easily referenced, and syndicated across the Web'. Below this is a link to 'Learn more about WorldCat Registry'. The right column contains a numbered list of three steps: 1. 'Build it FREE' (Load up your profile with information), 2. 'Share it FREE' (Give access to vendors, consortium partners, funding bodies and others), and 3. 'Update it FREE' (Keep your profile current so workflows you've streamlined keep flowing). Below the list, there are two sections: 'First time here? Get started!' with a search box and a 'Search' button, and 'Already have a Registry profile for your institution?' with 'Sign In' and 'Create a User Account' links. At the bottom, there are two sections: 'For consortium managers' and 'For content and service vendors', each with a brief description and a 'Learn more' link.

# What Data is Included?



## One entry per physical library location

- Down to branch/departmental level

## Each entry includes:

- Geographic and electronic location -IP Addresses
- Services - **OPAC, OpenURL, Virtual Reference**
- People - contacts
- Administrative data
- Unique identifier & "crosswalks"
- Relationships and Affiliations

You are **not signed in** ([Sign In](#) or [Register](#)) [My Account](#)

**WorldCat® Registry** [Registry Home](#) [About](#) [FAQ](#) [Get E-mail Updates](#) [Feedback](#)

Search for Institutions:  [Search](#) [Advanced Search](#)

[Create a new WorldCat Registry profile](#)

---

**Profile Summary**  
**Georgia Institute of Technology**

|  |   |
|--|---|
| <b>Profile Summary</b><br><a href="#">Download this Profile as XML</a>   | <b>Institution Name:</b> Georgia Institute of Technology<br><b>Also Called:</b><br><b>Institution Type:</b> ARL Library   |
| <b>Name and Location</b>   | <b>Street Address:</b><br>PRICE GILBERT MEM LIBR 225 NORTH AVE<br>ATLANTA, Georgia 30332-0900<br>United States  |
| <b>Identifiers</b>   | <b>Business Address:</b><br>PRICE GILBERT MEM LIBR 225 NORTH AVE<br>ATLANTA, Georgia 30332-0900<br>United States  |
| <b>Relationships:</b><br><a href="#">Branches</a><br><a href="#">Affiliations</a>  | <b>Phone:</b><br><b>Fax:</b><br><b>E-mail Address:</b><br><b>Home Page:</b><br><b>Information Page:</b> <a href="http://www.library.gatech.edu/about_us/calendar/index.php">http://www.library.gatech.edu/about_us/calendar/index.php</a>   |
| <b>Services:</b><br><a href="#">IP Addresses</a><br><a href="#">Online Catalog</a><br><a href="#">OpenURL Resolvers</a><br><a href="#">Virtual Reference</a> | <b>Services:</b><br>IP Addresses: <a href="http://glib.gatech.edu/">http://glib.gatech.edu/</a><br>Online Catalogs: <a href="http://glib.gatech.edu/">http://glib.gatech.edu/</a><br><b>OpenURL Resolvers:</b> <a href="http://sfx.galib.usg.edu/sfx_dit/">http://sfx.galib.usg.edu/sfx_dit/</a><br><b>Virtual Reference:</b> <a href="http://www.questionpoint.org/crs/service/org.oclc.ask.AskAQuestion?oclc_symbol=GAT">http://www.questionpoint.org/crs/service/org.oclc.ask.AskAQuestion?oclc_symbol=GAT</a> |
| <b>Administrative Information</b>  |   |
| <b>Contacts</b>  |   |

Last updated on 2008-02-27

You: [Sign In](#) | [Create a User Account](#) | [My Account](#)  
Profiles: [Create a New Profile](#) | [Authorize Me to Manage a Profile](#)  
Help: [Frequently Asked Questions](#)  
Registry: [Home](#) | [About](#) | [Advanced Search](#) | [Data Sources](#) | [Feedback](#)  
Legal: [Copyright © 2008-2007 OCLC. All rights reserved.](#) | [Privacy Policy](#) | [Terms and Conditions](#)

It's good to have  
URL links 😊

# Registry Example:

## Georgia Institute of Technology

(<http://www.worldcat.org/registry/Institutions/5090>)

Signed in as **user1** ([Sign Out](#)) [My Account](#) [My Institution](#)

[Registry Home](#) [About](#) [FAQ](#) [Feedback](#)

**WorldCat® Registry**

Search for Institutions:  [Search](#) [Advanced Search](#)

[Create a new WorldCat Registry profile](#)

---

[Profile Summary](#) / **OpenURL Resolvers**

### Georgia Institute of Technology

[Profile Summary](#)  
[Download this Profile as XML](#)

---

**Name and Location**

**Identifiers**

**Relationships:**  
[Branches](#)  
[Affiliations](#)

**Services:**  
[IP Addresses](#)  
[Online Catalog](#)  
[OpenURL Resolvers](#)  
[Virtual Reference](#)

**Administrative Information**

[Contacts](#)

---

Last updated on 2008-02-27

**OpenURL Resolvers**

Does Georgia Institute of Technology have "link resolver" servers that deliver appropriate electronic resources to a Web user? List them here.

[Add OpenURL Resolver](#)

| OpenURL Resolvers   | Edit                 | Remove                 |
|---|----------------------|------------------------|
| <a href="http://sfx.galib.uga.edu/sfx_git1">http://sfx.galib.uga.edu/sfx_git1</a> | <a href="#">Edit</a> | <a href="#">Remove</a> |
| IP Addresses Visible to Authorized user only.                                     |                      |                        |

Find it @ GT

You: [Sign Out](#) | [Create a User Account](#) | [My Account](#)

Profiles: [Create a New Profile](#) | [Authorize Me to Manage a Profile](#)

Help: [Frequently Asked Questions](#)

Registry: [Home](#) | [About](#) | [Advanced Search](#) | [Data Sources](#) | [Feedback](#)

Legal: [Copyright © 2006-2007 OCLC. All rights reserved.](#) | [Privacy Policy](#) | [Terms and Conditions](#)

# How does it all work?



Library sets up Resolver  
information in the Registry

OCLC makes information available  
for content providers via OpenURL Gateway

Researcher searching  
the content receives library services



# Partners' Perspective



## Services Available Today

(<http://www.worldcat.org/affiliate/default.jsp>)

**NEW** [WorldCat Registry Search](#)

**Web service** Based on specified criteria, find and retrieve basic information about institutions and consortia profiled in the WorldCat Registry.

**NEW** [WorldCat Registry Detail](#)

**Web service** Retrieve detailed information about a single institution or consortium from its profile in the WorldCat Registry.

**NEW** [xISBN](#)

**Web service** Retrieve a list of International Standard Book Numbers (ISBNs) associated with a submitted ISBN, permitting end users to review other editions of that item. Free and subscription versions are available.

**NEW** [OpenURL Gateway](#)

**Web service** Using a special OpenURL link syntax, direct your Web users to full text and other online resources at an appropriate library based on the user's IP address.

**Free** for non-Commercial Use

Easy to Implement:

1. Replace Static OpenURL with "Gateway" URL

<Resolver Base URL>?<Item Details> becomes this:

<<http://worldcatlibraries.org/registry/gateway>>?<Item Details>

2. Gateway queries based on incoming IP and provides:

User's Library resolver or WorldCat Libraries

# Who uses Registry services ...



EthicShare Community





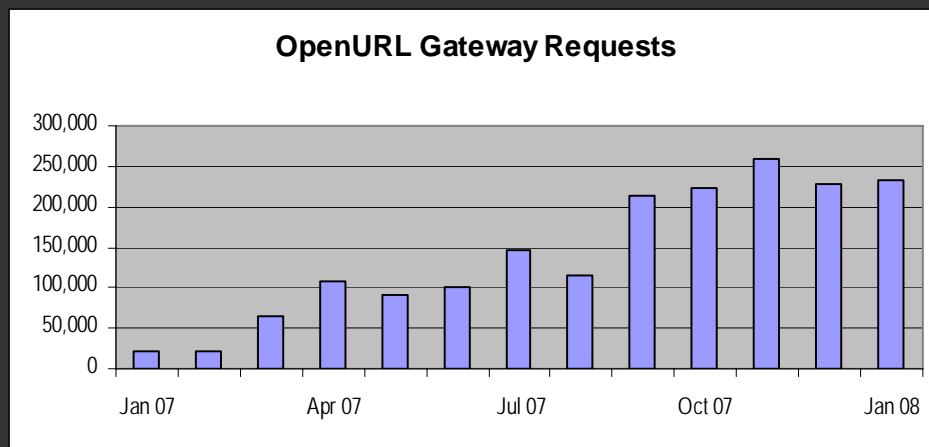
# Comprehensiveness

Over 93,000 Registry records

- Comprehensive for US Academic and Public to branch level
- Increasing comprehensiveness around the world
- Library does not need to be an OCLC member to be in the Registry

Over 1,600 records with at least one OpenURL resolver

- All major US Academic and ARL institutions
- Major vendors and home grown
- Working with OpenURL vendors to register on behalf of libraries



# How Libraries Can Help

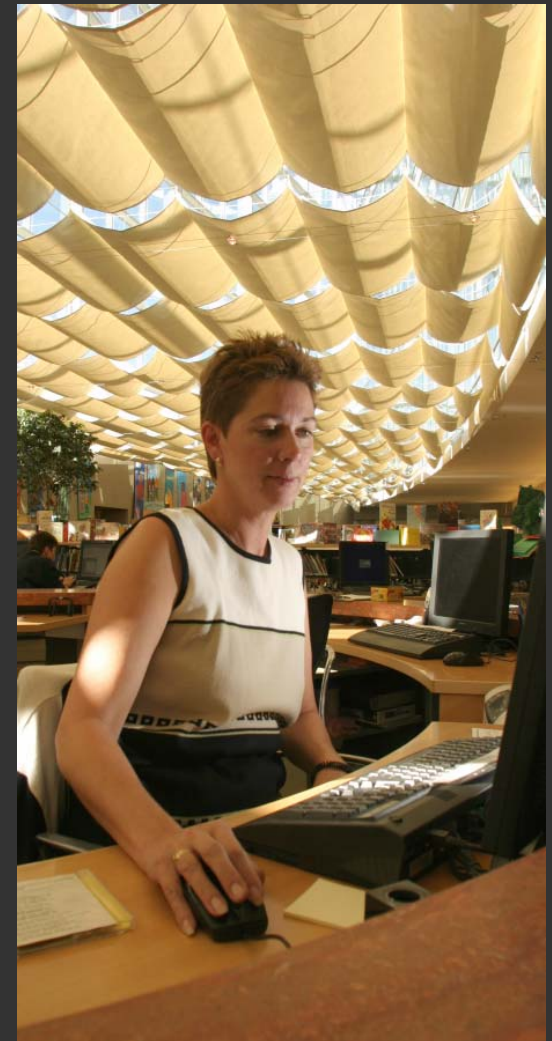


1. Sign in to the Registry at:

<http://www.worldcat.org/registry/institutions>

2. Create, review or edit your institution's Profile

3. Maintain information in Registry, especially URLs to your services



***Thank you for attending...***

**For more information, please contact:**

Lawrence Henry  
ERIC Program Manager  
lawrence.henry@csc.com  
[ericfeedback@csc.com](mailto:ericfeedback@csc.com)  
(800) 538-3742



Joanna White  
WorldCat Registry Product Manager  
whitej at oclc dot org

