

THINK GLOBAL, ACT REGIONAL

MegaRegion Symposium
Georgia Tech
Atlanta, GA
January 30, 2006



**Georgia
Tech**

**College of
Architecture**

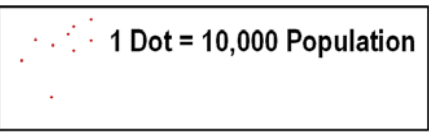
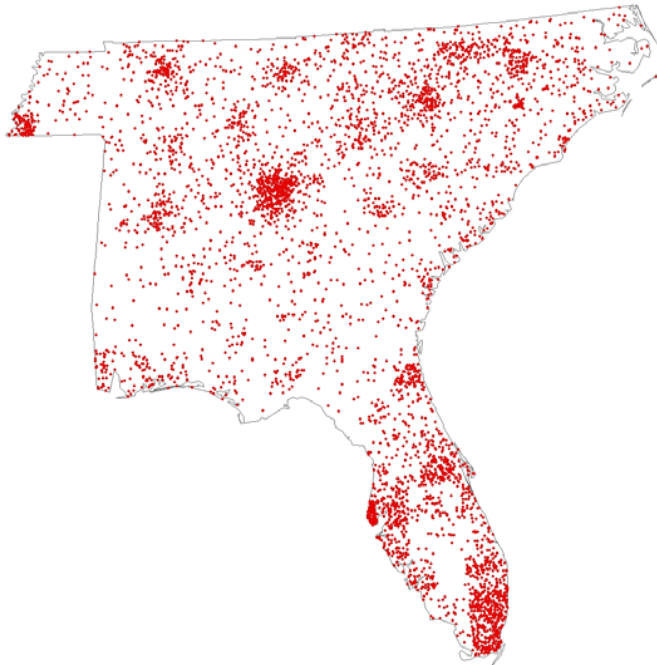
Unparalleled Population Growth

Year	U.S. Total	Southeastern States (TN,NC,SC,GA,AL,FL)
2000 actual	280 million	46.5 million
2050 projection	436 million (55.7% increase)	82.3 million (76.7% increase)

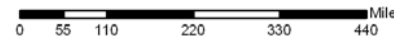
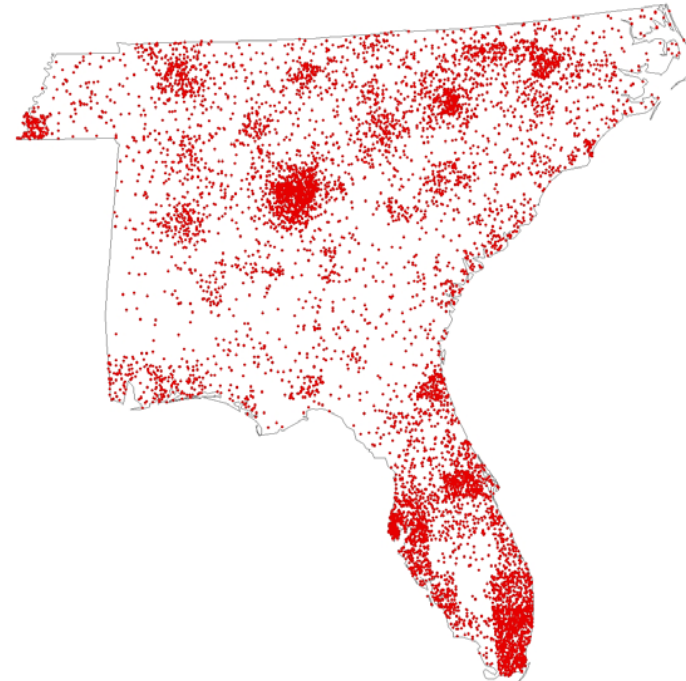
Unparalleled Population Growth

Population Growth, centered on centers

2000 : 46,547,000 people



2050 : 82,267,000 people



Source: Woods & Poole and calculations

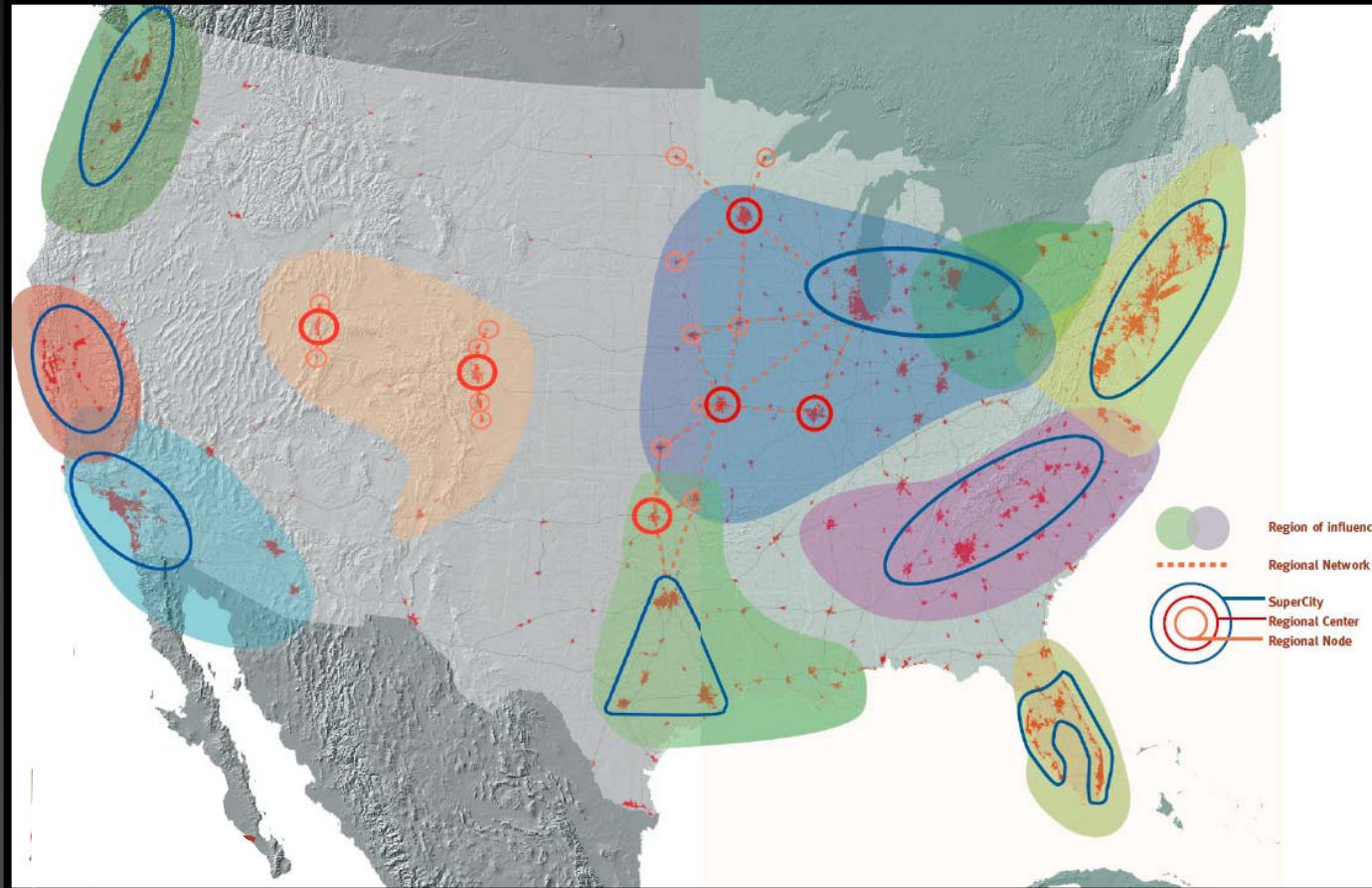
What is a SuperCity?

- Several independent metropolitan areas
- Connected by infrastructure
- Substantial interactions between/among areas
- Characterized by:
 - Relatively high density population and employment
 - Concentration of economic activity

What is a MegaRegion?

- The SuperCity and areas tied to the SuperCity by:
 - Natural environment
 - Flows of goods and services
 - Shared resources (water, labor, infrastructure, federal funding)
 - Social identity
 - Political boundaries

Emerging U.S. MegaRegions



Source: (Carbonell et al, 2005)

Importance of MegaRegion Concept

- Captures the economic, social, and population core for the U.S.
- Delineates the natural, economic, and social connections between cities, metropolitan areas, and rural places
- Is not new in Europe

Comparing the U.S. and the European Union



Land Mass	2.9 million square miles	1.5 million square miles
Population, 2004	287.8 million	456.8 million
Expected population growth, 2004 - 2030	45%	3%
Population density, 2004	97 / sq. mi.	298 / sq. mi.
2030	141 / sq. mi.	306 / sq. mi.

European Union Regional Approaches

- Incorporates coordinated approaches to economic growth, social services, and environmental protection
- Focuses on planning across local jurisdictional and national boundaries
- Ensures greater economic competitiveness, environmental sustainability, prosperity for EU

Purpose of Symposium

- Understand the concept of multi-state regionalism
- Explore examples of megaregions and their issues
- Focus on Southeastern MegaRegion
 - Issues
 - Challenges
 - Opportunities
- Chart a set of next steps

- Participants from throughout Southeast region
 - Elected officials
 - Business leaders
 - Government/Agency representatives
 - Nonprofit organizations (environment, business, education)
(See White sheet in packet)
- Presentations of 4 megaregional studies

Format for Today

- Panel discussion exploring relevance of megaregional thinking
- Breakout Sessions based on geographic scale
 - Importance/Relevance of regional thinking
 - Key issues/challenges/opportunities
(See Blue sheet in packet)

- Next Steps

- Addressing issues
- Upcoming actions

(Complete Green sheet – symposium feedback)