

Key Features of the EDL Repository



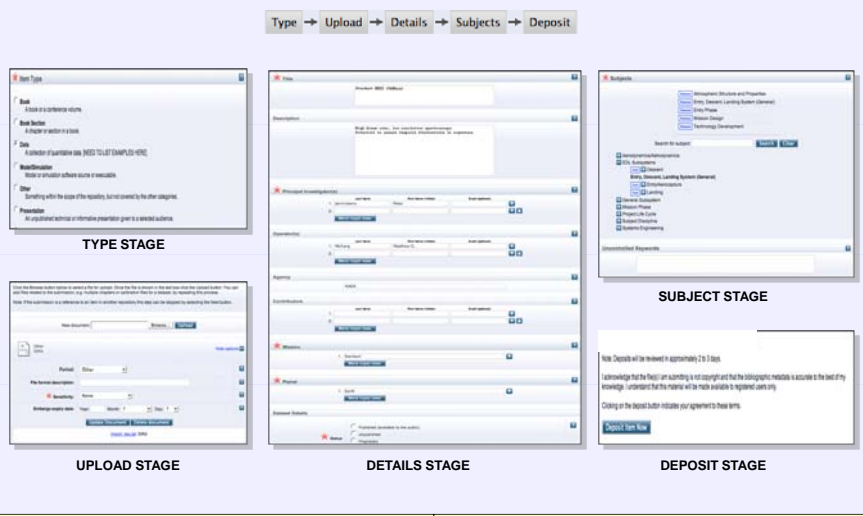
<https://edlr.jpl.nasa.gov>



This poster illustrates the main features of the Entry, Descent and Landing Repository(EDL-R), which is an online digital library containing technical data that contributed to the research, development, and flight of NASA EDL systems of past and present missions.

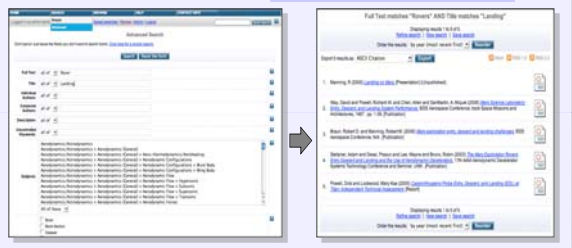
The EDL-R is a customization of the EPrints software, an open-source web-based digital library system. Features include a submission workflow, multiple search and browse mechanisms, and automatic notification of newly submitted material. Other important features such as batch-import and auto-completion have been implemented to facilitate the submission process.

Submission Workflow



- FIVE STAGES OF THE SUBMISSION WORKFLOW**
- 1.Type stage: material type is selected (e.g. dataset/publication, report, test results).
 - 2.Upload stage: material is uploaded and assigned a sensitivity level that defines who can view the material.
 - 3.Details stage: material is described using bibliographic info such as title, author, publisher.
 - 4.Subjects stage: material is assigned subject keywords. Subjects can be selected from a predefined subject tree or entered in a free-form text field.
 - 5.Deposit stage: depositor is presented with legal language. The depositor must agree with the terms to continue depositing the material.
- REVIEW PROCESS**
1. Deposited materials are held in a temporary review area where the curator can review them.
 2. Curator checks the submission for metadata completeness and accuracy, condition of submitted material, and appropriateness of the material.
 3. After the curator's review process, the material may be:
 - Returned to the submitter to correct any deficiencies
 - Deleted/Destroyed
 - Approved
 4. The material becomes "live" only after it has been approved by the curator.

Search Methods



- THREE SEARCH METHODS**
1. Quick Search – Google like text search.
 2. Simple Search – Quick search + sorting mechanism.
 3. Advanced Search – Allows the flexibility to search on any metadata field.
- AUTOMATIC NOTIFICATION FEATURE**
- Search criteria can be saved and configured to send notification e-mail messages when new material is submitted that matches the criteria.
 - Frequency of e-mail messages also configurable.

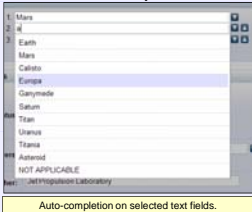
Browse Methods



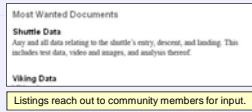
Registered users can peruse the EDL-R by using any of the 4 Browse methods: Browse by type, Browse by Author, Browse by Year, and Browse by Subject.

Other Features

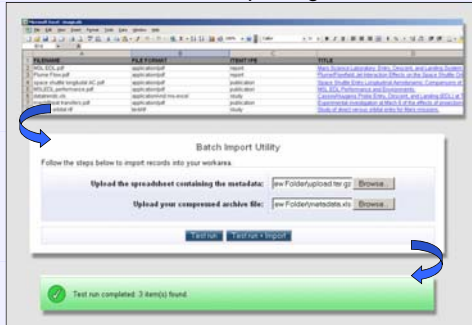
Auto-completion



Most Wanted List



Batch Importing



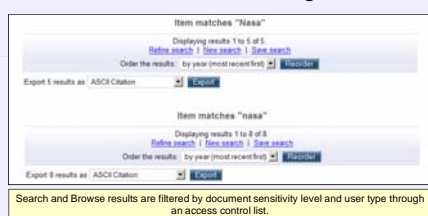
Several important features have been added to simplify user input. Auto-completion suggests data entry values while the Most Wanted List provides a bulletin board for users to post requests for material. Batching importing is useful for initiating a large number of submissions. Other features include password expiration reminders, saved searches, and automatic notification.

Security

Password Security



Document Filtering



The sensitivity of EDL data required the addition of many security features. User authentication is used in a number of areas in addition to other security measures such as Password strength and expiration, and SSL encryption. A future upgrade will include virus checking on all uploaded documents.