


B. Overview of the Decision Support Tool

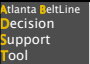



Overview of the Atlanta BeltLine Decision Support Tool

Jason Barringer
Myungje Woo
Center for Quality Growth and Regional Development
Georgia Institute of Technology

Atlanta BeltLine Decision Support Tool Strategic Planning Session, Georgia Tech, : Atlanta, Georgia October 16, 2008


© 2008 by CQGRD. All rights reserved.
Please cite Georgia Institute of Technology and the Center for Quality Growth and Regional Development whenever portions are reproduced.



INTRODUCTION

What is a Decision Support Tool (DST)?

- **Process that provides a consistent and reproducible basis for making decisions**
- **Provides a detailed picture of impacts related to the implementation of a plan or policy**



B. Overview of the Decision Support Tool

Atlanta BeltLine
Decision
Support
Tool

INTRODUCTION

What does a DST do?

- Organizes relevant info
- Spatially resolves actions of the plan
- Predicts impacts
- Generates performance measures

CGIRD

Atlanta BeltLine
Decision
Support
Tool

INTRODUCTION

How does a DST work?

Coordinates into one tool:

- Information tool
- Monitoring tool
- Modeling tool

CGIRD

B. Overview of the Decision Support Tool

Atlanta BeltLine
Decision
Support
Tool

INTRODUCTION

What are the inputs

- **Benchmark data**
 - Qualitative and Quantitative
- **Assessments**
 - Performance Measures
- **Stakeholder expectations**
 - Relevant information from surveys, charettes, and public meetings

CGRD

Atlanta BeltLine
Decision
Support
Tool

INTRODUCTION

What are the benefits of using a DST

- Investigate potential benefits of alternative scenarios
- Comparison between scenarios and with the baseline data
- Identify trade-offs
- Do projects/policies meet the stated goals

CGRD

B. Overview of the Decision Support Tool

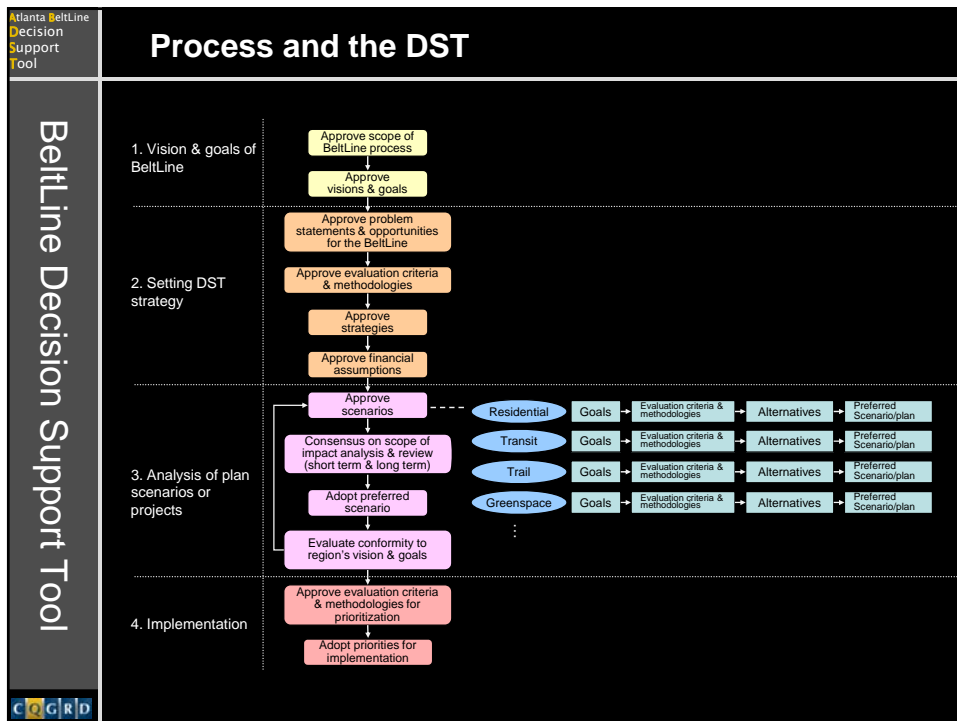
Atlanta BeltLine
Decision
Support
Tool

BeltLine Decision Support Tool

What is the purpose of the Atlanta BeltLine DST?

The primary objective is **to measure the impacts** of the 25 year long Atlanta BeltLine project, based on vision and goals of the BeltLine, and **to ensure the effectiveness and equity of its implementation.**

CG|R|D



B. Overview of the Decision Support Tool

Atlanta BeltLine
Decision
Support
Tool

Process of the BeltLine DST

(1) Vision and goals of BeltLine

```
graph TD; A[Approve scope of BeltLine process] --> B[Approve vision & goals]
```

Vision and **goals** of the Atlanta BeltLine will be key criteria **in creating decision tool variables** to measure the impacts of plan scenarios and **making decisions in each process**.

CG|RD

Atlanta BeltLine
Decision
Support
Tool

Process of the BeltLine DST

(2) Setting the DST Strategy

```
graph TD; A[Approve problem statements & opportunities for the BeltLine] --> B[Approve evaluation criteria & methodologies]; B --> C[Approve strategies]; C --> D[Approve financial assumptions]
```

- ▶ Identify specific **problems and needs** for the BeltLine areas and each project.
- ▶ Determine **possible variables and methods** of DST.
- ▶ **Set strategies** to address selected problems
- ▶ Estimate available **revenues and approximate costs** for strategies.

CG|RD

B. Overview of the Decision Support Tool

Atlanta BeltLine
Decision
Support
Tool

(3) Analysis of Plan Scenarios

Process of the BeltLine DST

```
graph TD
    A[Approve scenarios] -.-> B[Consensus on scope of impact analysis & review (short term & long term)]
    B --> C[Adopt preferred scenario]
    C --> D[Evaluate conformity to region's vision & goals]
    
    subgraph Analysis_Phase
        R[Residential] --> RG[Goals] --> RE[Evaluation criteria & methodologies] --> RA[Alternatives] --> RP[Preferred Scenario/plan]
        T[Transit] --> TG[Goals] --> TE[Evaluation criteria & methodologies] --> TA[Alternatives] --> TP[Preferred Scenario/plan]
        Tr[Trail] --> TrG[Goals] --> TrE[Evaluation criteria & methodologies] --> TrA[Alternatives] --> TrP[Preferred Scenario/plan]
        G[Greenspace] --> GG[Goals] --> GE[Evaluation criteria & methodologies] --> GA[Alternatives] --> GP[Preferred Scenario/plan]
    end
```

- ▶ Approve **plan scenarios** (two levels).
- ▶ **Conduct analyses** to measure the impacts of each plan scenario and choose preferred plan scenarios (short term & long term).
- ▶ Determine **preferred plan scenarios**.
- ▶ Evaluate **conformity** to region's **vision & goals**.

ccgrd

Atlanta BeltLine
Decision
Support
Tool

Short Term Analysis

Process of the BeltLine DST

- ▶ **How soon** can proposed plans generate **benefits** in a community?
- ▶ How well are they **harmony with on-going project**?
- ▶ How much are they consistent with **community's vision and goals**?

Methods: DST metrics

ccgrd

B. Overview of the Decision Support Tool

Atlanta BeltLine
Decision
Support
Tool

Long Term Analysis

Process of the BeltLine DST

- ▶ Such **large scaled** and **long term** developments will bring substantial impacts on physical, economic, environmental, and socio-economic areas.

Methods:

- Economic efficiency analysis
- Population impact analysis
- Transportation impact analysis
- Health impact analysis
- Environmental impact analysis

CGRD

Atlanta BeltLine
Decision
Support
Tool

(4) Implementation

Process of the BeltLine DST

```
graph TD; A[Approve evaluation criteria & methodologies for prioritization] --> B[Adopt priorities for implementation]
```

- ▶ Conduct **Multi Criteria Decision Analysis** to determine **priority** of plan scenarios
- ▶ **Community engagement framework**

Methods: Visualization will be useful to facilitate communications

CGRD

B. Overview of the Decision Support Tool



THANK YOU!

Center for Quality Growth and Regional Development
Georgia Institute of Technology | Atlanta, Georgia
www.cqgrd.gatech.edu

© 2008 by CQGRD. All rights reserved.
Please cite Georgia Institute of Technology and the Center for Quality Growth and Regional Development whenever portions are reproduced.

