

SCHOLASTIC ASSESSMENT TEST (SAT) SCORES

Table 2.1 Averages for Entering Freshmen, Fall Terms 1991-2000*

Fall Term	Verbal		Math		Composite
	Male	Female	Male	Female	
Georgia Tech Cumulative Enrollment Average SAT					
1991	542	529	661	618	1,203
1992	558	549	674	633	1,226
1993	559	552	679	638	1,232
1994	562	563	681	646	1,233
1995	560	563	679	646	1,232
1996	623	627	683	653	1,298
1997	631	633	681	652	1,305
1998	626	625	678	646	1,296
1999	630	628	684	650	1,304
2000	642	642	697	664	1,330

Table 2.2 Averages for Entering Freshmen, Academic Years 1990-1991 to 1999-2000*

Year	Verbal		Math		Composite
	Male	Female	Male	Female	
Georgia Tech Cumulative Enrollment Average SAT					
1990-1991	538	529	655	625	1,183
1991-1992	541	529	660	617	1,187
1992-1993	558	548	673	634	1,218
1993-1994	554	548	675	633	1,218
1994-1995	553	555	671	637	1,215
1995-1996	619	624	659	637	1,281
1996-1997	613	618	660	636	1,268
1997-1998	624	628	673	647	1,291
1998-1999	620	615	672	638	1,281
1999-2000	627	624	679	647	1,296

Year	Verbal		Math		Composite
	Male	Female	Male	Female	
National Average SAT					
1990-1991	426	418	497	453	896
1991-1992	428	419	499	456	899
1992-1993	428	420	502	457	904
1993-1994	425	421	501	460	902
1994-1995	429	426	503	463	910
1995-1996	507	503	527	492	1,014
1996-1997	507	503	530	494	1,016
1997-1998	509	502	531	496	1,017
1998-1999	509	502	531	495	1,016
1999-2000	507	504	533	498	1,019

* Effective 1996, reported SAT scores are recentered.



ADMISSIONS

Table 2.3 Freshman Admissions

	Number Applied	Number Accepted	% of Applied Accepted	Number Enrolled	% of Applied Enrolled	% of Accepted Enrolled
Year and College, Fall Terms 1996-2000						
1996						
Architecture	539	213	40%	90	17%	42%
Computing	624	335	54%	176	28%	53%
Engineering	4,806	2,759	57%	1,156	24%	42%
Ivan Allen	690	345	50%	154	22%	45%
Sciences	1,234	752	61%	267	22%	36%
Total	7,893	4,404	56%	1,843	23%	42%
1997						
Architecture	512	241	47%	108	20%	45%
Computing	682	396	58%	195	29%	49%
Engineering	4,673	2,957	63%	1,122	24%	38%
Ivan Allen	715	404	57%	176	25%	44%
Sciences	1,055	676	64%	220	21%	33%
Special Non-Degree	39	28	72%	27	69%	96%
Total	7,676	4,702	61%	1,848	24%	39%
1998						
Architecture	392	267	68%	124	32%	46%
Computing	819	606	74%	299	37%	49%
Engineering	4,150	3,142	76%	1,357	33%	43%
Ivan Allen	375	261	70%	108	29%	41%
Management	187	124	66%	72	39%	58%
Sciences	915	733	80%	231	25%	32%
Special Non-Degree	17	15	88%	15	88%	100%
Total	6,855	5,148	75%	2,206	32%	43%
1999						
Architecture	432	240	56%	109	25%	45%
Computing	1,021	647	63%	343	34%	53%
Engineering	4,476	3,172	71%	1,394	31%	44%
Ivan Allen	345	229	66%	91	26%	40%
Management	288	178	62%	103	36%	58%
Sciences	1,021	730	71%	267	26%	37%
Special Non-Degree	19	14	74%	11	58%	79%
Total	7,602	5,210	69%	2,318	30%	44%
2000						
Architecture	519	258	50%	117	23%	45%
Computing	1,337	697	52%	378	28%	54%
Engineering	5,059	2,992	59%	1,271	25%	42%
Ivan Allen	442	243	55%	102	23%	42%
Management	350	164	47%	91	26%	55%
Sciences	1,141	718	63%	235	21%	33%
Special Non-Degree	20	10	50%	10	50%	100%
Total	8,868	5,082	57%	2,204	25%	43%
Ethnic Origin, Fall Semester 2000						
Asian	1,731	847	49%	349	20%	41%
Black	1,271	340	27%	129	10%	38%
Hispanic	410	196	48%	64	16%	33%
Native American	25	10	40%	6	24%	60%
White	5,316	3,643	69%	1,640	31%	45%
Multiracial	89	43	48%	16	18%	37%
Declined Submission	26	3				
Gender, Fall Semester 2000						
Male	6,379	3,616	57%	1,563	25%	43%
Female	2,484	1,466	59%	641	26%	44%
Declined Submission	5					

Source: Office of Undergraduate Admissions

ADMISSIONS

Table 2.4 Transfer Admissions

	Number Applied	Number Accepted	% of Applied Accepted	Number Enrolled	% of Applied Enrolled	% of Accepted Enrolled
1996						
Year and College, Fall Terms 1996-2000						
Architecture	89	20	23%	20	22%	100%
Computing	122	43	35%	37	30%	86%
Engineering	724	308	43%	251	35%	81%
Ivan Allen	123	30	24%	26	21%	87%
Sciences	210	121	58%	79	38%	65%
Total	1,268	522	41%	413	33%	79%
1997						
Architecture	92	23	25%	20	22%	87%
Computing	83	30	36%	23	27%	77%
Engineering	483	239	49%	205	42%	86%
Ivan Allen	103	37	36%	32	31%	86%
Sciences	72	27	38%	19	26%	70%
Special Non-Degree	33	27	82%	24	73%	89%
Total	866	383	44%	323	37%	84%
1998						
Architecture	63	26	41%	22	35%	85%
Computing	111	43	39%	37	33%	86%
Engineering	568	341	60%	291	51%	85%
Ivan Allen	32	8	25%	6	19%	75%
Management	51	15	29%	12	24%	80%
Sciences	88	45	51%	32	36%	71%
Special Non-Degree	38	30	79%	21	55%	70%
Total	951	508	54%	421	44%	82%
1999						
Architecture	79	15	19%	9	11%	60%
Computing	148	53	36%	43	29%	81%
Engineering	732	389	53%	316	43%	81%
Ivan Allen	46	11	24%	8	17%	73%
Management	69	34	49%	31	45%	91%
Sciences	103	45	44%	34	33%	76%
Special Non-Degree	28	18	64%	14	50%	78%
Total	1,205	565	47%	455	38%	81%
2000						
Architecture	71	17	24%	15	21%	88%
Computing	158	59	37%	48	30%	81%
Engineering	695	337	48%	298	43%	88%
Ivan Allen	45	11	24%	11	24%	100%
Management	106	33	31%	30	28%	91%
Sciences	113	41	36%	31	27%	76%
Special Non-Degree	32	27	84%	21	66%	78%
Total	1,220	525	43%	454	37%	86%
Ethnic Origin, Fall Semester 2000						
Asian	293	97	33%	82	28%	85%
Black	273	106	39%	94	34%	89%
Hispanic	62	27	44%	23	37%	85%
Native American	2	0	0%	0	0%	0%
White	572	292	51%	252	44%	86%
Multiracial	8	3	38%	3	38%	100%
Declined Submission	10	0				
Gender, Fall Semester 2000						
Male	900	399	44%	351	39%	88%
Female	320	126	39%	103	32%	82%



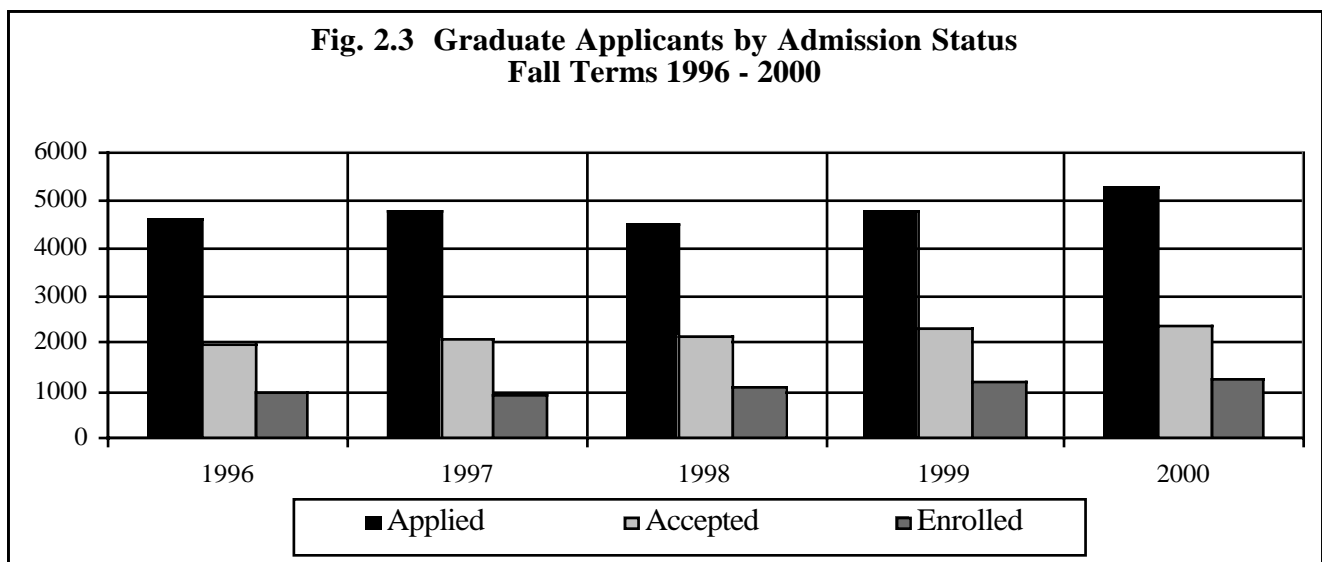
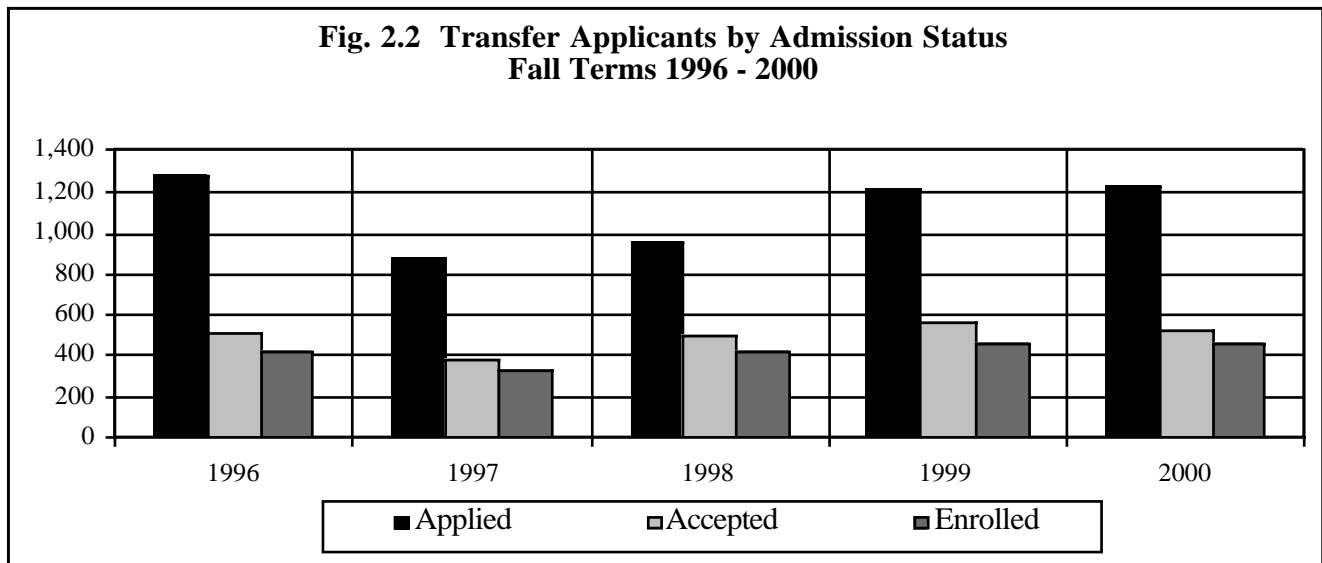
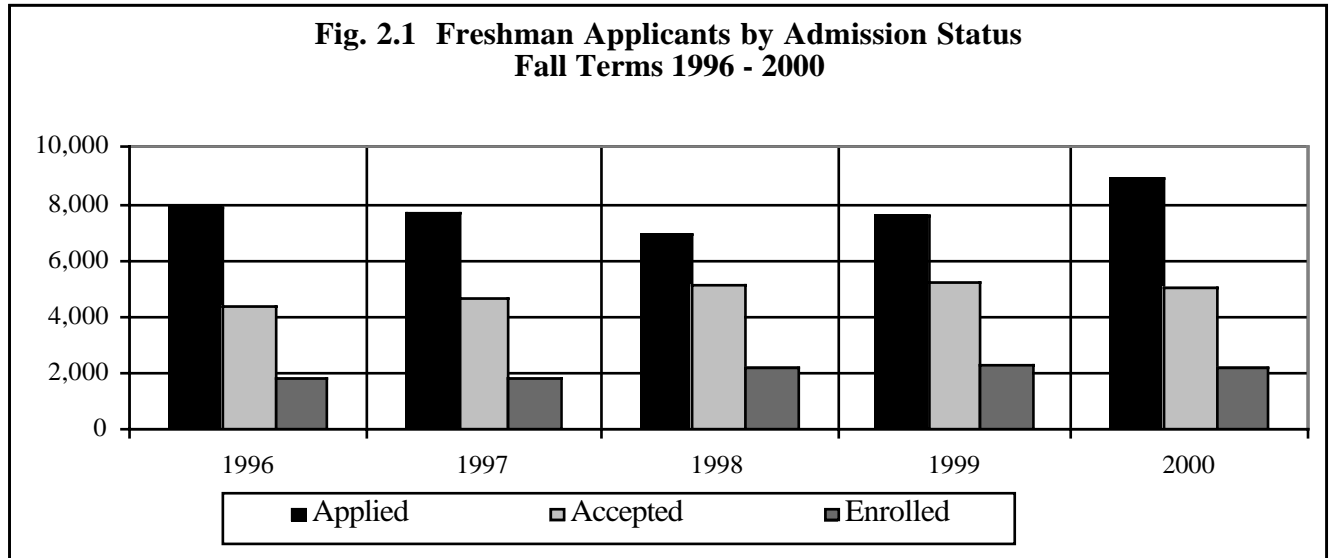
ADMISSIONS

Table 2.5 Graduate Admissions

	Number Applied	Number Accepted	% of Applied Accepted	Number Enrolled	% of Applied Enrolled	% of Accepted Enrolled
Year and College, Fall Terms 1996-2000						
1996						
Architecture	385	181	47%	92	24%	51%
Computing	280	99	35%	47	17%	47%
Engineering	2,705	1,212	45%	589	22%	49%
Ivan Allen	776	314	40%	159	20%	51%
Sciences	483	198	31%	77	16%	52%
Total	4,629	1,954	42%	964	21%	49%
1997						
Architecture	303	172	57%	81	27%	47%
Computing	330	140	42%	65	20%	46%
Engineering	2,916	1,251	43%	565	19%	45%
Ivan Allen	721	318	44%	123	17%	39%
Sciences	509	178	35%	102	20%	57%
Total	4,779	2,059	43%	936	20%	45%
1998						
Architecture	322	198	61%	95	30%	48%
Computing	357	111	31%	64	18%	58%
Engineering	2,840	1,338	47%	630	22%	47%
Ivan Allen	223	122	55%	61	27%	50%
Management	440	227	52%	107	24%	47%
Sciences	349	165	47%	114	33%	69%
Total	4,531	2,161	48%	1,071	24%	50%
1999						
Architecture	329	200	61%	99	30%	50%
Computing	443	201	45%	95	21%	47%
Engineering	2,998	1,429	48%	710	24%	50%
Ivan Allen	239	124	52%	61	26%	49%
Management	433	198	46%	107	25%	54%
Sciences	360	167	46%	118	33%	71%
Total	4,802	2,319	48%	1,190	25%	51%
2000						
Architecture	357	191	54%	109	31%	57%
Computing	506	199	39%	84	17%	42%
Engineering	3,171	1,510	48%	752	24%	50%
Ivan Allen	308	154	50%	84	27%	55%
Management	509	171	34%	89	17%	52%
Sciences	455	178	39%	125	27%	70%
Total	5,306	2,403	45%	1,243	23%	52%
Ethnic Origin, Fall Semester 2000						
Asian	2,890	870	30%	392	14%	45%
Black	354	147	42%	82	23%	56%
Hispanic	205	114	56%	57	28%	50%
Native American	8	5	63%	1	13%	20%
White	1,799	1,234	69%	696	39%	56%
Multiracial	50	33	66%	15	30%	45%
Gender, Fall Semester 2000						
Male	3,939	1,762	45%	919	23%	52%
Female	1,367	641	47%	324	24%	51%

Source: Graduate Academic and Enrollment Services

ADMISSIONS





ADMISSIONS

Table 2.6 Sources of Ten or More Entering Freshmen, Fall Semester 2000

High School	Location	Number of Students
Brookwood	Snellville, GA	44
Chattahoochee	Alpharetta, GA	44
Roswell	Roswell, GA	41
Parkview	Lilburn, GA	31
Duluth	Duluth, GA	30
Alan C. Pope	Marietta, GA	27
Lassiter	Marietta, GA	24
George Walton Comprehensive	Marietta, GA	23
Lakeside	Evans, GA	23
Norcross	Norcross, GA	23
Harrison	Kennesaw, GA	22
Milton	Alpharetta, GA	22
Collins Hill	Suwanee, GA	21
Fayette County	Fayetteville, GA	21
Dunwoody	Dunwoody, GA	19
McIntosh	Peachtree City, GA	19
Centennial	Roswell, GA	17
Lakeside	Atlanta, GA	17
Chamblee	Chamblee, GA	16
Sprayberry Senior	Marietta, GA	16
Woodstock	Woodstock, GA	16
Shiloh	Lithonia, GA	15
The Marist School	Atlanta, GA	14
McEachern	Powder Springs, GA	14
North Cobb	Kennesaw, GA	14
Starr's Mill	Fayetteville, GA	14
Campbell	Smyrna, GA	13
Columbus	Columbus, GA	13
Evans	Evans, GA	13
Sequoyah	Canton, GA	13
The Westminster Schools	Atlanta, GA	13
Meadowcreek	Norcross, GA	12
Saint Pius X	Atlanta, GA	12
Douglas County	Douglasville, GA	11
Houston County	Warner Robins, GA	11
Berkmar	Lilburn, GA	10
Salem	Conyers, GA	10

FINANCIAL AID

Table 2.7 Student Financial Aid Awards, Fiscal Year 1999-2000

Award	Number of Awards	Amount of Awards
<u>Georgia Tech Awarded Aid</u>		
Pell Grants	1,373	\$2,633,282
Supplemental Educational Opportunity Grants	313	381,250
Federal Work-Study Program	246	375,643
Perkins Loans	376	1,043,785
Stafford Loans - subsidized	2,888	11,418,072
Stafford Loans - unsubsidized	2,320	9,211,840
Parent Loans Undergraduate Students (PLUS)	897	5,695,117
Subtotal Federal Funds	8,413	\$30,758,989
Hope Scholarships	4,269	\$12,519,638
Subtotal State Funds	4,269	\$12,519,638
Georgia Tech National Merit	292	\$336,340
Georgia Tech National Achievement	23	30,767
Subtotal National Merit/Achievement	315	\$367,107
Institutional Scholarships	2,485	\$4,606,591
Georgia Tech Long Term Loans	103	212,468
Short Term Loans	527	758,404
Subtotal Institutional Scholarships/Loans	3,115	\$5,577,463
Total Georgia Tech Awarded Aid	16,112	\$49,223,197
<u>Outside Awards</u>		
Miscellaneous Scholarships/Grants	1,042	\$2,284,317
Georgia Governor's Scholarships	718	1,072,877
ROTC Scholarships	355	1,285,621
Robert C. Byrd Scholarships	197	266,625
Miscellaneous Loans	293	1,814,692
Total Outside Aid	2,605	\$6,724,132
Total Awards	18,717	\$55,947,329





FINANCIAL AID

President's Scholarship Program

The President's Scholarship Program is Georgia Tech's premier merit-based scholarship. Since its inception in 1981, the program has maintained as its objective, the selection and enrollment of students who have demonstrated excellence in academic and leadership performance and have a strong potential to become leaders on campus and in the community. The scholarship offers two levels of awards—the President's level and the Institute level. For the 2000 competition (for students who entered Georgia Tech as freshmen in summer or fall of 2000), the four-year award amounts for the two levels are: Georgia resident: \$24,000 and \$12,000; non-Gorgia resident: \$44,000 and \$24,000.

Two significant changes were made in the selection process beginning with the 1997-98 academic year competition: there is no longer a separate application for the President's Scholarship, nor is there a minimum required SAT or ACT score to qualify for the competition. To apply for the President's Scholarship, a student must submit the Georgia Tech application for admission by October 31, 2000. The most qualified applicants in terms of high school grades, standardized test scores, writing ability, and demonstrated leadership and involvement in activities will be selected as scholarship semifinalists. Each semifinalist will be sent a supplemental application in December and will be interviewed by a Regional Committee in January. Approximately 140 of the top-ranked candidates in the competition will be invited as finalists to attend the President's Scholarship Weekend on campus in the spring.

Table 2.8 President's Scholarship Program Summary, 1991-1992 through 2000-2001

Entering Year	Mean HSA*	Mean SAT**	Georgia		Out-of-State		Total
			Male	Female	Male	Female	
1991-92	3.9	1,418	31	14	11	4	60
1992-93	3.9	1,435	19	9	13	7	48
1993-94	3.9	1,440	27	4	13	4	48
1994-95	3.9	1,437	21	12	19	8	60
1995-96	3.9	1,431	33	10	15	10	68
1996-97	3.9	1,413	38	18	11	6	73
1997-98	3.9	1,484	24	11	21	9	65
1998-99	4.0	1,419	18	29	26	13	86
1999-00	3.9	1,412	16	19	26	20	81
2000-01	4.0	1,456	13	18	25	20	76

ACT: American College Testing

* HSA: High School Average

**SAT: Scholastic Assessment Test

HOPE Scholarship Program

HOPE -- **Helping Outstanding Pupils Educationally** -- is Georgia's unique program, created by Governor Zell Miller, that rewards students' hard work with financial assistance in degree, diploma, or certificate programs at any eligible Georgia public or private college, university, or public technical institute. Additionally, other HOPE assistance is available for students who received a GED after July 1, 1993. HOPE is funded by Georgia's Lottery for Education.

Table 2.9 HOPE Scholarship Program Summary, 1993-1994 through 2000-2001

Year	Number	Amount
1993-1994	593	\$855,748
1994-1995	2,078	\$4,181,037
1995-1996	3,151	\$7,097,070
1996-1997	3,490	\$8,369,368
1997-1998	3,835	\$9,551,109
1998-1999	4,242	\$11,160,897
1999-2000	3,945	\$12,874,658
2000-2001*	4,162	\$14,277,945

*This figure reflects current awards, not expenditures

Source: Special Programs Office, Enrollment Services

FINANCIAL AID

Table 2.10 National Merit and Achievement Scholars

Rank	All Institutions		Public Institutions				
	Institution	# of Scholars	Rank	Institution	Freshman Enrollment	# of Scholars	% of Class
National Merit Scholars, 1999-2000 Academic Year							
1.	Harvard University	382	1.	University of California - Berkeley	3,523	245	6.95%
2.	University of Texas - Austin*	245	2.	University of Florida	3,717	166	4.47%
	University of California - Berkeley*	245	3.	Georgia Institute of Technology	2,307	103	4.46%
4.	Stanford University	209	4.	University of Oklahoma	3,209	132	4.11%
5.	Yale University	191	5.	UNC-Chapel Hill	3,390	137	4.04%
6.	University of Florida*	166	6.	University of Texas - Austin	6,427	245	3.81%
7.	Rice University	162	7.	University of Kansas	3,790	116	3.06%
8.	University of Chicago	151	8.	Iowa State University	4,032	113	2.80%
9.	Massachusetts Institute of Technology	148	9.	Texas A & M University	6,655	142	2.13%
	University of Southern California	148	10.	Arizona State University	5,628	119	2.11%
11.	Texas A & M University*	142	11.	Ohio State University	6,056	110	1.82%
12.	Washington University	141					
13.	UNC-Chapel Hill*	137					
14.	University of Oklahoma*	132					
15.	New York University	130					
16.	Arizona State University*	119					
17.	University of Kansas*	116					
18.	Brigham Young University	115					
19.	Iowa State University*	113					
20.	Ohio State University*	110					
21.	Princeton University	106					
22.	Georgia Institute of Technology*	103					
National Achievement Scholars, 1999-2000 Academic Year							
1.	Harvard University	62	1.	Florida A & M University	2,228	62	2.78%
	Florida A & M University*	62	2.	University of Florida	3,717	28	0.75%
3.	Howard University	46	3.	University of Alabama	2,692	16	0.59%
4.	Stanford University	35	4.	Georgia Institute of Technology	2,307	12	0.52%
5.	Yale University	29	5.	UNC-Chapel Hill	3,390	14	0.41%
6.	University of Florida*	28		University of Oklahoma	3,209	13	0.41%
7.	Massachusetts Institute of Technology	25	7.	Iowa State University	4,032	12	0.30%
8.	Washington University	23	8.	Florida State University	5,127	15	0.29%
9.	University of Southern California	22					
10.	New York University	19					
11.	Duke University	17					
12.	Princeton University	16					
	University of Alabama*	16					
	University of Pennsylvania	16					
15.	Florida State University*	15					
16.	UNC-Chapel Hill*	14					
17.	University of Oklahoma*	13					
	Emory University	13					
19.	Iowa State University*	12					
	Morehouse College	12					
	Georgia Institute of Technology*	12					

* Public Institution



FINANCIAL AID

Graduate Financial Assistance

Regents' Opportunity Scholarships

Georgia Tech has participated in the Regents' Opportunity Scholarship Program since 1978. Since then, 136 African-Americans, 6 Hispanics, 1 Native American, and 88 non-minority persons have been supported on Regents' Opportunity Scholarships. Twenty-two of these students have completed the Ph.D. degree, and 124 have received Master's degrees. Fourteen Regents' Scholars were enrolled in 1999-2000.

President's Fellowship Program

President's Fellowships were established in 1973 to enhance the scope and quality of Georgia Tech's Ph.D. programs. Through support of the Georgia Tech Foundation, President's Fellowships are offered annually to a select number of highly qualified U.S nationals who intend to pursue doctoral degrees. President's Fellowships provide \$5,500 stipends, which supplement other support offered by the academic units. Since the inception of the President's Fellowship Program in Fall Quarter 1973, 1,175 awards have been made. As of Spring Semester 2000, 97 of the 100 new fellows were enrolled in the program.

Domenica Rea D'Onofrio Graduate Fellowships

Approximately \$13,000 per year may be awarded in this fellowship program to native born citizens of Italy. Three Italian students were supported on this fellowship in 1999-2000.

Tuition Waivers

Outstanding students who are not residents of Georgia may receive out-of-state tuition waivers. Approximately 150 of these are awarded annually.

Table 2.11 President's Fellowship Survey, as of Fiscal Year 2000

Fiscal Year	Number of New Fellows	Number Enrolled as of Spring 2000	Number Awarded Terminal M.S.	Number Awarded Ph.D.	Number Awarded Ph.D./M.S.
1973-89	335	2	146	149	79
1989-90	67	4	29	30	17
1990-91	90	5	35	47	26
1991-92	81	2	30	44	27
1992-93	74	11	21	44	31
1993-94	73	17	30	26	19
1994-95	72	34	28	16	8
1995-96	70	46	19	5	4
1996-97	78	55	26	2	2
1997-98	65	64	14	3	2
1998-99	70	69	4	0	0
1999-00	100	97	0	0	0

ENROLLMENT

Table 2.12 Students Enrolled by Country of Residence, Fall Semester 2000

Country	Undergraduate	Graduate	Total	Country	Undergraduate	Graduate	Total
Albania	1	1	2	Kazakhstan	0	1	1
Algeria	1	0	1	Kenya	6	1	7
Anguilla	1	0	1	Kiribati	1	0	1
Antigua and Barbuda	1	1	2	Korea (North)	2	0	2
Argentina	3	11	14	Korea (South)	30	271	301
Armenia	0	2	2	Kuwait	1	1	2
Australia	0	3	3	Kyrgyzstan	0	3	3
Austria	0	3	3	Lebanon	1	8	9
Azerbaijan	1	1	2	Liberia	0	1	1
Bahamas (The)	5	0	5	Lithuania	0	1	1
Bahrain	2	0	2	Macedonia	0	1	1
Bangladesh	9	15	24	Malaysia	11	6	17
Barbados	1	1	2	Mauritius	0	2	2
Belgium	4	2	6	Mexico	2	25	27
Belize	0	2	2	Mongolia	1	0	1
Benin	0	3	3	Morocco	2	0	2
Bermuda	1	1	2	Netherlands	0	4	4
Bolivia	2	0	2	New Zealand	0	2	2
Brazil	8	13	21	Nicaragua	2	0	2
British Virgin Islands	1	0	1	Nigeria	12	7	19
Bulgaria	1	4	5	Norway	0	2	2
Burma (Myanmar)	1	0	1	Pakistan	31	18	49
Cameroon	0	1	1	Panama	9	8	17
Canada	4	14	18	Paraguay	1	0	1
Chile	1	2	3	Peru	1	6	7
China	12	327	339	Philippines	0	2	2
Colombia	4	17	21	Poland	0	1	1
Costa Rica	3	2	5	Romania	1	9	10
Cyprus	2	2	4	Russia	1	19	20
Denmark	0	2	2	Saint Lucia	1	0	1
Dominica	0	1	1	Saudi Arabia	1	9	10
Dominican Republic	0	2	2	Senegal	2	1	3
Ecuador	4	3	7	Seychelles	1	0	1
Egypt	0	8	8	Singapore	11	6	17
El Salvador	1	1	2	Slovenia	0	2	2
Eritrea	0	2	2	South Africa	4	2	6
Estonia	0	1	1	Spain	2	3	5
Ethiopia	1	1	2	Sri Lanka	1	0	1
Finland	2	1	3	Suriname	1	0	1
France	7	107	114	Sweden	4	2	6
Gambia (The)	0	1	1	Switzerland	2	2	4
Georgia	0	1	1	Syria	1	0	1
Germany	6	12	18	Taiwan	8	55	63
Germany, Federal Rep of	4	31	35	Tanzania	1	1	2
Ghana	5	2	7	Thailand	4	51	55
Greece	4	8	12	Togo	1	1	2
Guatemala	1	3	4	Trinidad and Tobago	6	6	12
Guinea	1	0	1	Tunisia	0	2	2
Haiti	2	1	3	Turkey	4	81	85
Honduras	0	2	2	Uganda	0	1	1
Hong Kong	7	5	12	Ukraine	0	3	3
Hungary	0	1	1	USSR	1	2	3
Iceland	1	2	3	United Arab Emirates	8	0	8
India	129	238	367	United Kingdom/Gr Britain	4	11	15
Indonesia	13	20	33	Uruguay	1	1	2
Iran	2	13	15	Venezuela	5	16	21
Iraq	1	0	1	Vietnam	8	0	8
Israel	3	4	7	Yugoslavia	0	10	10
Italy	1	10	11	Zaire	1	0	1
Jamaica	6	3	9				
Japan	5	22	27	Total	475	1,608	2,083
Jordan	2	5	7				





ENROLLMENT

Table 2.13 Students Enrolled by State of Residence, Fall Semester 2000

State	Undergraduate			Graduate			Institute
	Male	Female	Total	Male	Female	Total	Total
Alaska	3	0	3	2	0	2	5
Alabama	149	46	195	46	16	62	257
Arizona	7	3	10	7	5	12	22
Arkansas	16	6	22	13	4	17	39
California	45	33	78	59	20	79	157
Colorado	13	9	22	8	4	12	34
Connecticut	42	6	48	7	4	11	59
Delaware	7	2	9	3	1	4	13
District of Columbia	3	1	4	6	3	9	13
Florida	499	137	636	142	43	185	821
Georgia	4,804	2,231	7,035	688	312	1,000	8,035
Hawaii	3	3	6	1	0	1	7
Idaho	1	3	4	2	0	2	6
Illinois	40	16	56	23	15	38	94
Indiana	8	5	13	14	6	20	33
Iowa	3	3	6	6	2	8	14
Kansas	14	3	17	4	3	7	24
Kentucky	36	12	48	6	5	11	59
Louisiana	53	10	63	24	12	36	99
Maine	4	0	4	4	0	4	8
Maryland	81	31	112	33	18	51	163
Massachusetts	69	10	79	23	13	36	115
Michigan	24	13	37	24	21	45	82
Minnesota	10	2	12	10	2	12	24
Mississippi	29	8	37	12	5	17	54
Missouri	23	6	29	11	5	16	45
Montana	3	0	3	3	0	3	6
Nebraska	8	1	9	2	2	4	13
Nevada	4	2	6	1	0	1	7
New Hampshire	12	5	17	1	2	3	20
New Jersey	98	27	125	27	15	42	167
New Mexico	3	0	3	8	1	9	12
New York	118	33	151	66	21	87	238
North Carolina	130	30	160	49	19	68	228
North Dakota	0	0	0	0	1	1	1
Ohio	63	12	75	36	11	47	122
Oklahoma	7	5	12	6	7	13	25
Oregon	5	3	8	5	3	8	16
Pennsylvania	80	24	104	39	13	52	156
Rhode Island	11	2	13	6	1	7	20
South Carolina	137	40	177	46	9	55	232
South Dakota	3	0	3	2	1	3	6
Tennessee	191	35	226	58	19	77	303
Texas	159	57	216	90	27	117	333
Utah	4	0	4	5	1	6	10
Vermont	3	3	6	2	1	3	9
Virginia	141	43	184	58	28	86	270
Washington	15	8	23	11	3	14	37
West Virginia	9	1	10	4	3	7	17
Wisconsin	7	6	13	12	3	15	28
Wyoming	1	0	1	0	2	2	3
Other U. S. Territories and Possessions							
Guam	2	0	2	1	0	1	3
Puerto Rico	26	7	33	12	4	16	49
Virgin Islands	4	1	5	0	0	0	5
Unknown*	62	34	96	3	4	7	103
Total	7,292	2,978	10,270	1,731	720	2,451	12,721

* Unknown = U. S. students who gave no state designation.

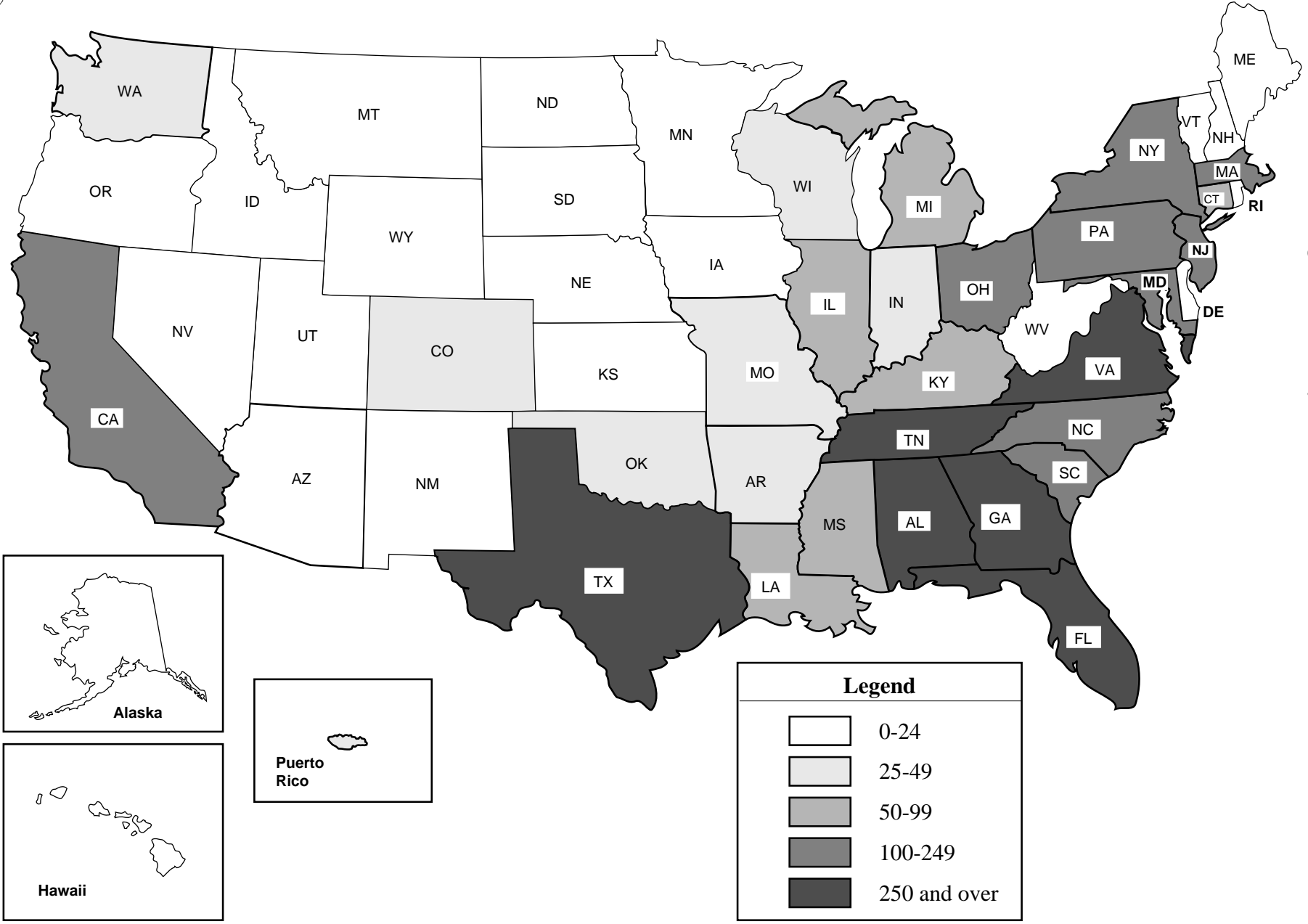


Fig. 2.4 Enrollment by State of Residence, Fall Semester 2000



ENROLLMENT

Table 2.14 Students Enrolled by Georgia County of Residence, Fall Semester 2000

County	Undergrad.	Graduate	Total	County	Undergrad.	Graduate	Total	County	Undergrad.	Graduate	Total
Appling	3	0	3	Fannin	4	0	4	Oglethorpe	2	0	2
Atkinson	1	0	1	Fayette	309	17	326	Paulding	27	4	31
Bacon	1	0	1	Floyd	55	6	61	Peach	8	2	10
Baker	0	0	0	Forsyth	71	5	76	Pickens	11	0	11
Baldwin	14	2	16	Franklin	6	0	6	Pierce	0	0	0
Banks	5	0	5	Fulton	903	279	1,182	Pike	5	1	6
Barrow	12	2	14	Gilmer	4	2	6	Polk	8	1	9
Bartow	42	7	49	Glascock	0	0	0	Pulaski	1	0	1
Ben Hill	7	0	7	Glynn	32	3	35	Putnam	6	0	6
Berrien	3	0	3	Gordon	20	3	23	Quitman	2	2	4
Bibb	94	11	105	Grady	8	1	9	Rabun	5	1	6
Bleckley	3	0	3	Greene	4	0	4	Randolph	2	0	2
Brantley	2	0	2	Gwinnett	1,068	106	1,174	Richmond	130	12	142
Brooks	2	0	2	Habersham	18	1	19	Rockdale	83	9	92
Bryan	17	0	17	Hall	95	6	101	Schley	1	0	1
Bulloch	25	1	26	Hancock	0	0	0	Screven	10	1	11
Burke	9	0	9	Haralson	4	1	5	Seminole	3	0	3
Butts	5	2	7	Harris	9	1	10	Spalding	33	1	34
Calhoun	3	1	4	Hart	8	0	8	Stephens	5	1	6
Camden	13	2	15	Heard	1	0	1	Stewart	1	0	1
Candler	1	0	1	Henry	107	7	114	Sumter	8	0	8
Carroll	38	4	42	Houston	90	8	98	Talbot	0	0	0
Catoosa	35	1	36	Irwin	4	0	4	Taliaferro	0	0	0
Charlton	0	2	2	Jackson	10	0	10	Tattnall	2	0	2
Chatham	159	21	180	Jasper	5	0	5	Taylor	0	0	0
Chattahoochee	2	0	2	Jeff Davis	4	0	4	Telfair	0	0	0
Chattooga	10	1	11	Jefferson	9	0	9	Terrell	6	0	6
Cherokee	114	5	119	Jenkins	6	0	6	Thomas	25	3	28
Clarke	48	11	59	Johnson	1	0	1	Tift	11	1	12
Clay	1	0	1	Jones	9	0	9	Toombs	13	1	14
Clayton	188	17	205	Lamar	5	2	7	Towns	6	0	6
Clinch	4	0	4	Lanier	0	0	0	Treutlen	1	0	1
Cobb	1,043	147	1,190	Laurens	15	1	16	Troup	29	2	31
Coffee	11	1	12	Lee	27	0	27	Turner	3	0	3
Colquitt	13	1	14	Liberty	21	0	21	Twiggs	4	0	4
Columbia	205	10	215	Lincoln	2	0	2	Union	5	0	5
Cook	5	0	5	Long	1	0	1	Upson	21	0	21
Coweta	52	5	57	Lowndes	49	2	51	Walker	13	2	15
Crawford	4	0	4	Lumpkin	9	1	10	Walton	29	0	29
Crisp	8	3	11	Macon	8	0	8	Ware	15	0	15
Dade	3	0	3	Madison	4	0	4	Warren	0	0	0
Dawson	1	1	2	Marion	3	0	3	Washington	11	2	13
Decatur	5	7	12	McDuffie	20	0	20	Wayne	7	0	7
Dekalb	656	141	797	McIntosh	1	0	1	Webster	0	0	0
Dodge	3	1	4	Meriwether	7	1	8	Wheeler	1	0	1
Dooley	7	1	8	Miller	1	0	1	White	9	0	9
Dougherty	45	2	47	Mitchell	2	0	2	Whitfield	38	4	42
Douglas	86	5	91	Monroe	16	1	17	Wilcox	0	0	0
Early	6	0	6	Montgomery	2	1	3	Wilkes	2	0	2
Echols	0	0	0	Morgan	20	0	20	Wilkinson	2	0	2
Effingham	27	1	28	Murray	9	1	10	Worth	4	0	4
Elbert	2	0	2	Muscogee	93	13	106	Unknown*	144	57	201
Emanuel	8	1	9	Newton	23	1	24				
Evans	2	4	6	Oconee	28	2	30	Total	7,035	1,000	8,035

* Unknown = In-state students who gave no county designation.

ENROLLMENT

Fig. 2.5 Enrollment by Georgia County of Residence, Fall Semester 2000





ENROLLMENT

Table 2.15 Class Enrollment by Gender and Ethnicity, Fall Semester 2000

Class	Asian		Black		Hispanic		Native American		White		Multiracial	
	M	F	M	F	M	F	M	F	M	F	M	F
<u>Undergraduate</u>												
JEPHS**	2	2	0	1	0	0	0	0	6	1	0	0
Freshman	348	131	138	80	67	15	3	4	1,550	612	21	11
Sophomore	298	113	116	84	62	23	0	1	1,351	476	30	13
Junior	266	98	142	90	58	17	2	1	1,147	456	26	12
Senior	293	120	187	103	63	23	3	3	1,384	518	30	19
Special Undergraduate	10	8	9	9	4	1	0	0	52	31	0	1
Total Undergraduate	1,217	472	592	367	254	79	8	9	5,490	2,094	107	56
<u>Graduate</u>												
Master's	338	126	75	82	81	27	1	1	916	288	12	7
Ph.D.	668	159	82	47	63	19	2	2	702	260	12	2
Special Graduate	8	3	2	0	4	1	0	0	55	13	0	1
Total Graduate	1,014	288	159	129	148	47	3	3	1,673	561	24	10
<u>Institute</u>												
Total	2,231	760	751	496	402	126	11	12	7,163	2,655	131	66

** JEPHS=Joint Enrollment Program for High School Students

Table 2.16 Class Enrollment by Gender and Year, Fall Terms 1998-2000

Class	M	F	Total	M	F	Total	M	F	Total
	1998			1999			2000		
<u>Undergraduate</u>									
JEPHS**	10	5	15	10	3	13	8	4	12
Freshman	2,148	833	2,981	2,122	843	2,965	2,127	853	2,980
Sophomore	1,619	638	2,257	1,645	687	2,332	1,857	710	2,567
Junior	1,472	641	2,113	1,531	659	2,190	1,641	674	2,315
Senior	2,026	794	2,820	1,907	763	2,670	1,960	786	2,746
Special Undergraduate	82	36	118	52	35	87	75	50	125
Total Undergraduate	7,357	2,947	10,304	7,267	2,990	10,257	7,668	3,077	10,745
<u>Graduate</u>									
Master's	1,374	477	1,851	1,399	475	1,874	1,423	531	1,954
Ph.D.	1,323	404	1,727	1,419	465	1,884	1,529	489	2,018
Special Graduate	55	22	77	47	13	60	69	18	87
Total Graduate	2,752	903	3,655	2,865	953	3,818	3,021	1,038	4,059
<u>Institute</u>									
Total	10,109	3,850	13,959	10,132	3,943	14,075	10,689	4,115	14,804

** JEPHS=Joint Enrollment Program for High School Students

ENROLLMENT

Table 2.17 Undergraduate Enrollment by College, Ethnicity, and Gender, Fall Semester 2000

School	Asian		Black		Hispanic		Native American		White		Multi-Racial		Total		Total
	M	F	M	F	M	F	M	F	M	F	M	F	M	F	
Architecture	20	15	7	10	7	6	0	0	127	95	2	3	163	129	292
Building Construction	4	1	5	3	2	0	0	0	82	18	0	2	93	24	117
Industrial Design	6	17	3	4	2	4	0	1	64	70	1	0	76	96	172
Undeclared Architecture	0	0	0	0	0	0	0	0	1	3	0	0	1	3	4
Total Architecture	30	33	15	17	11	10	0	1	274	186	3	5	333	252	585
Computer Science	280	68	52	19	24	0	4	0	887	93	18	3	1,265	183	1,448
Total Computing	280	68	52	19	24	0	4	0	887	93	18	3	1,265	183	1,448
Aerospace	47	9	21	8	14	2	2	0	272	60	7	3	363	82	445
Chemical	69	42	27	29	12	5	0	0	259	143	2	3	369	222	591
Civil	9	9	19	18	13	6	0	0	260	101	2	4	303	138	441
Computer Engineering	235	22	83	35	22	2	1	1	472	30	11	3	824	93	917
Electrical	195	29	113	43	27	4	1	0	475	46	13	4	824	126	950
GTREP Civil Engineering	0	0	0	0	0	0	0	0	10	5	0	0	10	5	15
GTREP Computer Engineering	0	0	1	0	0	0	0	0	7	1	0	0	8	1	9
Industrial	67	87	47	54	42	15	0	0	461	279	7	3	624	438	1,062
Materials Science and Eng.	0	0	0	1	1	0	0	0	31	9	0	0	32	10	42
Mechanical	116	23	78	34	41	10	0	2	758	142	20	3	1,013	214	1,227
Nuclear and Radiological Eng.	2	0	0	0	0	0	0	0	26	6	1	0	29	6	35
Polymer and Textile Chem.	0	1	1	1	0	0	0	0	9	8	0	0	10	10	20
Textile Engineering	0	0	0	1	0	0	0	0	0	0	0	0	0	1	1
Textiles Enterprise Management	0	1	0	0	0	0	0	0	10	4	0	0	10	5	15
Textile and Fiber Engineering	7	2	4	8	0	1	0	0	30	24	0	2	41	37	78
Undeclared Engineering	19	10	5	6	6	0	0	2	140	60	4	1	174	79	253
Total Engineering	766	235	399	238	178	45	4	5	3,220	918	67	26	4,634	1,467	6,101
Economics	2	2	3	1	1	1	0	0	25	11	2	0	33	15	48
History, Technology, and Soc.	2	0	2	4	2	0	0	0	30	24	0	0	36	28	64
International Affairs	9	9	2	7	3	1	0	0	84	105	2	5	100	127	227
Intl. Affairs and Modern Lang.	0	0	1	0	0	0	0	0	5	13	0	1	6	14	20
Public Policy	2	0	0	3	0	0	0	0	18	14	0	1	20	18	38
Science, Tech. & Culture	2	3	3	3	1	0	0	0	40	36	0	0	46	42	88
Undeclared Ivan Allen	0	1	1	2	1	0	0	0	9	22	0	0	11	25	36
Total Ivan Allen	17	15	12	20	8	2	0	0	211	225	4	7	252	269	521
Management	53	51	86	30	16	10	0	0	534	306	10	9	699	406	1,105
Management Science	0	0	0	0	0	0	0	0	0	1	0	0	0	1	1
Total Management	53	51	86	30	16	10	0	0	534	307	10	9	699	407	1,106
Applied Physics	0	0	0	0	0	0	0	0	3	1	0	0	3	1	4
Biology	26	32	13	15	5	9	0	2	89	165	1	3	134	226	360
Chemistry	12	13	2	7	1	1	0	1	44	64	1	1	60	87	147
Discrete Mathematics	1	0	0	0	0	1	0	0	3	2	0	0	4	3	7
Earth and Atmospheric Sci.	0	2	0	1	1	0	0	0	14	18	0	0	15	21	36
Mathematics	4	2	2	3	1	0	0	0	44	22	1	0	52	27	79
Physics	8	2	1	2	4	0	0	0	65	14	1	1	79	19	98
Psychology	4	3	0	3	1	0	0	0	17	22	1	0	23	28	51
Undeclared Sciences	4	6	1	2	0	0	0	0	27	25	0	0	32	33	65
Total Sciences	59	60	19	33	13	11	0	3	306	333	5	5	402	445	847
No College Declared	12	10	9	10	4	1	0	0	58	32	0	1	83	54	137
Total No College Declared	12	10	9	10	4	1	0	0	58	32	0	1	83	54	137
Total Institute	1,217	472	592	367	254	79	8	9	5,490	2,094	107	56	7,668	3,077	10,745





ENROLLMENT

Table 2.18 Graduate Enrollment by College, Ethnicity, and Gender, Fall Semester 2000

School	Asian		Black		Hispanic		Native American		White		Multi-Racial		Total		Total
	M	F	M	F	M	F	M	F	M	F	M	F	M	F	
Architecture	31	16	8	6	5	4	0	0	76	42	0	1	120	69	189
Building Construction	0	0	3	2	0	0	0	0	15	3	0	0	18	5	23
City Planning	5	5	1	8	0	1	0	0	24	17	0	1	30	32	62
Total Architecture	36	21	12	16	5	5	0	0	115	62	0	2	168	106	274
Algorithms, Comb., & Opt.	5	0	0	0	0	0	0	0	2	0	0	0	7	0	7
Computer Science	83	21	12	9	9	2	0	0	102	23	1	0	207	55	262
Human-Computer Interaction	8	1	0	2	0	0	0	0	6	8	0	0	14	11	25
Total Computing	96	22	12	11	9	2	0	0	110	31	1	0	228	66	294
Algorithms, Comb., & Opt.	1	0	0	0	0	0	0	0	2	1	0	0	3	1	4
Aerospace	106	14	5	0	9	0	0	0	111	13	2	0	233	27	260
Bioengineering	9	4	1	2	2	1	0	0	19	15	0	0	31	22	53
Biomedical Engineering	0	1	0	0	0	0	0	0	1	7	0	0	1	8	9
Chemical	33	14	6	5	4	2	1	1	44	13	0	0	88	35	123
Civil	61	14	5	5	12	5	0	0	78	21	2	0	158	45	203
Electrical and Computer Eng.	292	47	35	19	27	3	0	1	325	37	4	2	683	109	792
Eng. Sci. & Mechanics	1	1	0	0	0	0	0	0	0	0	0	0	1	1	2
Environmental	29	13	1	2	3	1	1	0	33	22	1	0	68	38	106
Health Physics	0	1	0	2	0	1	0	0	10	6	1	0	11	10	21
Health Systems	1	1	0	0	0	0	0	0	0	3	0	0	1	4	5
Industrial Engineering	102	19	6	9	23	7	0	0	69	34	3	0	203	69	272
International Logistics	1	0	4	1	0	1	0	0	15	2	0	0	20	4	24
Materials Science & Eng.	21	3	3	7	1	0	0	0	23	7	2	1	50	18	68
Mechanical	79	19	30	7	16	5	1	0	277	49	5	0	408	80	488
Nuclear and Radiological Eng.	3	0	1	2	0	0	0	0	16	4	0	0	20	6	26
Operations Research	2	3	0	1	1	1	0	0	14	3	0	0	17	8	25
Polymers	3	2	0	0	0	0	0	0	2	0	0	0	5	2	7
Quantitative and Comp. Finance	1	0	0	0	0	0	0	0	4	0	0	0	5	0	5
Textile Engineering	11	8	0	0	0	0	0	0	2	1	0	0	13	9	22
Textile and Fiber Chemistry	2	1	0	0	0	0	0	0	0	0	0	0	2	1	3
Textile and Fiber Engineering	5	3	0	0	0	0	0	0	3	2	0	0	8	5	13
Total Engineering	763	168	97	62	98	27	3	2	1,048	240	20	3	2,029	502	2,531
Economics	0	0	1	1	1	0	0	0	1	1	0	0	3	2	5
History of Technology	3	1	0	1	0	0	0	0	8	6	0	0	11	8	19
Human-Computer Interaction	0	1	0	0	0	0	0	0	2	4	0	0	2	5	7
Information Design & Tech.	5	6	0	3	2	1	0	0	12	12	0	1	19	23	42
International Affairs	6	4	0	1	1	2	0	0	14	24	0	3	21	34	55
Public Policy	12	2	3	9	2	4	0	0	18	19	0	0	35	34	69
Total Ivan Allen	26	14	4	15	6	7	0	0	55	66	0	4	91	106	197
Management	31	21	6	6	11	3	0	1	100	30	1	0	149	61	210
Management of Technology	1	2	6	3	3	0	0	0	54	11	1	0	65	16	81
Total Management	32	23	12	9	14	3	0	1	154	41	2	0	214	77	291
Algorithms, Comb., & Opt.	1	1	0	0	0	0	0	0	2	1	0	0	3	2	5
Bioinformatics	0	0	0	0	0	0	0	0	1	0	0	0	1	0	1
Biology	7	9	1	1	0	0	0	0	15	21	0	0	23	31	54
Chemistry	15	13	8	12	2	2	0	0	71	39	0	0	96	66	162
Earth and Atmos. Science	7	10	1	2	0	0	0	0	21	9	0	1	29	22	51
Human-Computer Interaction	1	0	0	0	0	0	0	0	0	0	0	0	1	0	1
Mathematics	4	2	3	0	9	1	0	0	23	6	0	0	39	9	48
Physics	22	3	8	0	3	0	0	0	41	5	1	0	75	8	83
Psychology	3	0	1	1	2	0	0	0	15	39	0	0	21	40	61
Quantitative and Comp. Finance	1	0	0	0	0	0	0	0	2	1	0	0	3	1	4
Statistics	0	2	0	0	0	0	0	0	0	0	0	0	0	2	2
Total Sciences	61	40	22	16	16	3	0	0	191	121	1	1	291	181	472
Total Institute	1,014	288	159	129	148	47	3	3	1,673	561	24	10	3,021	1,038	4,059

ENROLLMENT

Table 2.19 Undergraduate Enrollment by College, Fall Terms 1991-2000

School	1991	1992	1993	1994	1995	1996	1997	1998	1999	2000
Architecture	446	443	367	312	332	308	287	323	289	292
Building Construction	98	102	88	86	89	97	101	88	77	117
Industrial Design	99	112	116	123	134	153	164	173	163	172
Undeclared Architecture	2	1	0	0	0	0	0	0	10	4
Total Architecture	645	658	571	521	555	558	552	584	539	585
Computer Science	445	411	449	528	659	769	948	1,184	1,292	1,448
Total Computing	445	411	449	528	659	769	948	1,184	1,292	1,448
Aerospace	389	386	334	265	245	239	266	339	368	445
Ceramic and Materials	100	99	110	92	70	85	70	57	49	42
Chemical	560	693	740	790	825	764	691	690	662	591
Civil	594	607	631	691	700	664	595	553	499	441
Computer Engineering	227	255	311	360	442	548	604	761	823	917
Electrical	1,424	1,314	1,269	1,174	1,147	1,074	953	1,004	963	950
Engineering Science and Mechanics	54	53	30	14	3	—	—	—	—	—
GTREP Civil	—	—	—	—	—	—	—	—	—	15
GTREP Computer Engineering	—	—	—	—	—	—	—	—	—	9
Industrial and Systems	861	797	815	858	911	981	990	1,098	1,072	1,062
Mechanical	1,282	1,247	1,115	1,113	1,091	1,049	1,033	1,076	1,136	1,227
Nuclear and Radiological	72	73	63	59	45	33	26	23	24	35
Polymer and Textile Chemistry	—	—	—	—	—	39	37	34	27	20
Textiles	52	53	44	39	34	23	28	27	1	—
Textile Chemistry	19	23	24	37	57	—	—	—	—	—
Textile Engineering	128	132	145	142	123	89	84	85	1	1
Textile and Fiber Engineering	—	—	—	—	—	—	—	—	66	78
Textiles Enterprise Management	—	—	—	—	—	—	—	—	19	15
Undeclared Engineering	505	473	530	461	437	402	440	430	364	253
Total Engineering	6,271	6,206	6,174	6,107	6,130	5,990	5,817	6,177	6,074	6,101
Economics	52	42	38	43	44	52	43	51	42	48
History, Technology, and Society	8	24	32	30	38	39	48	59	51	64
International Affairs	85	153	173	168	161	158	167	201	217	227
Intl Affairs and Modern Language	—	—	—	—	—	—	—	—	—	20
Literature, Communication, and Culture	6	11	1	—	—	—	—	—	—	—
Public Policy	—	—	—	—	—	—	—	3	14	38
Science, Technology and Culture	—	—	19	24	24	35	52	62	74	88
Undeclared Ivan Allen	77	67	50	50	78	88	91	81	58	36
Total Ivan Allen	228	297	313	315	345	372	401	457	456	521
Management	1,065	889	746	667	706	738	797	925	960	1,105
Management Science	36	41	46	46	46	35	49	26	11	1
Total Management*	1,101	930	792	713	752	773	846	951	971	1,106
Biology	239	249	274	324	369	360	352	347	332	360
Chemistry	122	137	139	152	168	146	140	130	135	147
Earth and Atmosphere Sciences	—	—	18	42	36	42	44	35	40	36
Mathematics	79	77	83	83	79	75	68	71	76	86
Physics	153	140	159	147	129	97	101	79	109	102
Psychology	30	36	39	48	52	58	67	60	54	51
Undeclared Sciences	174	178	171	232	199	229	96	96	80	65
Total Sciences	797	817	883	1,028	1,032	1,007	868	818	826	847
No College Declared	—	—	—	—	—	—	162	133	99	137
Total No College Declared	—	—	—	—	—	—	162	133	99	137
Total Institute	9,487	9,319	9,182	9,212	9,473	9,469	9,594	10,304	10,257	10,745

*Management was a part of the Ivan Allen College until 1998.





ENROLLMENT

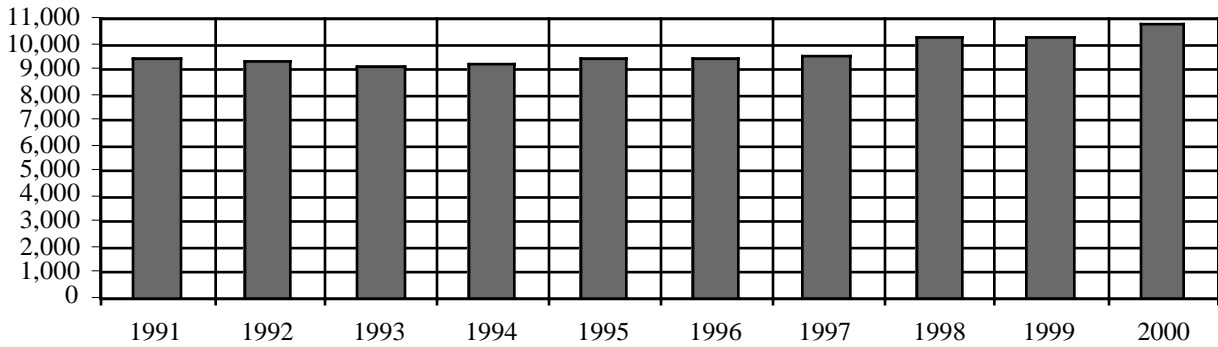
Table 2.20 Graduate Enrollment by College, Fall Terms 1991-2000

School	1991	1992	1993	1994	1995	1996	1997	1998	1999	2000
Architecture	171	180	193	192	172	166	158	158	173	189
Building Construction	—	—	—	—	—	—	—	—	—	23
City Planning	74	81	98	91	86	80	69	79	75	62
Total Architecture	245	261	291	283	260	246	227	237	248	274
Algorithms, Combinatorics, & Opt.	—	—	—	—	—	—	2	2	2	7
Bioengineering	—	—	—	—	—	—	—	1	1	0
Computer Science	239	246	233	225	204	191	188	220	247	262
Human-Computer Interaction	—	—	—	—	—	—	6	12	16	25
Total Computing	239	246	233	225	204	191	196	235	266	294
Algorithms, Combinatorics, & Opt.	—	—	—	—	—	—	—	2	3	4
Aerospace	174	191	206	240	190	202	196	213	224	260
Bioengineering	—	—	—	—	—	—	11	30	47	53
Biomedical	—	—	—	—	—	—	—	—	—	9
Ceramic and Materials	25	40	39	43	36	22	34	54	75	68
Chemical	83	86	96	108	117	110	109	100	106	123
Civil	178	212	217	216	246	257	245	212	204	203
Electrical and Computer Engineering	700	740	807	817	735	714	690	745	780	792
Engineering Science and Mechanics	25	30	25	17	12	7	6	6	4	2
Environmental Engineering	80	90	88	125	137	135	136	114	94	106
Health Systems	—	—	6	10	14	6	10	10	13	5
Industrial and Systems	317	299	251	220	209	193	177	211	237	272
International Logistics	—	—	—	—	—	—	—	—	—	24
Mechanical	311	334	320	314	356	367	412	435	460	488
Metallurgical	36	33	38	38	40	54	34	19	—	—
Nuclear and Health Physics	97	122	117	105	83	78	62	60	45	47
Operations Research	—	—	18	18	10	12	19	17	24	25
Polymers	—	—	—	—	—	—	5	5	6	7
Quantitative and Comp. Finance	—	—	—	—	—	—	—	—	—	5
Statistics	—	—	—	—	—	—	1	3	5	0
Textiles	19	15	13	6	4	4	3	6	—	—
Textile Engineering	41	45	45	58	52	57	39	35	24	22
Textile and Fiber Chemistry	8	5	4	4	7	6	5	5	5	3
Textile and Fiber Engineering	—	—	—	—	—	—	—	—	15	13
Undeclared Engineering	—	23	15	12	1	4	6	0	0	0
Total Engineering	2,094	2,265	2,305	2,351	2,249	2,228	2,200	2,282	2,371	2,531
Economics	2	3	8	24	20	8	11	9	10	5
History of Technology	—	—	9	7	15	17	13	12	15	19
Human-Computer Interaction	—	—	—	—	—	—	1	2	6	7
Information, Design & Technology	—	—	21	33	37	39	35	42	36	42
International Affairs	—	—	—	—	—	19	33	30	45	55
Public Policy	20	32	32	38	44	42	44	46	42	69
Technology and Science Policy	30	17	8	5	3	1	1	—	—	—
Undeclared Ivan Allen	—	—	—	—	—	—	1	0	0	0
Total Ivan Allen	52	52	78	107	119	126	139	141	154	197
Management	219	232	220	213	206	216	203	206	225	210
Management of Technology	—	—	—	—	23	51	74	92	91	81
Total Management*	219	232	220	213	229	267	277	298	316	291
Algorithms, Combinatorics, & Opt.	—	—	—	—	—	—	3	7	5	5
Bioinformatics	—	—	—	—	—	—	—	—	—	1
Biology	42	46	46	40	40	42	47	50	54	54
Chemistry	127	115	118	121	123	117	130	139	157	162
Earth and Atmospheric Sciences	69	68	83	68	70	70	48	48	48	51
Human-Computer Interaction	—	—	—	—	—	—	—	1	1	1
Mathematics	66	90	85	83	79	67	70	67	60	48
Physics	100	113	114	108	96	85	82	82	71	83
Psychology	73	82	90	89	89	77	70	64	63	61
Quantitative and Comp. Finance	—	—	—	—	—	—	—	—	—	4
Statistics	—	—	—	—	—	—	2	4	4	2
Undeclared	1	1	1	0	4	0	1	0	0	0
Total Sciences	478	515	537	509	501	458	453	462	463	472
Total Institute	3,327	3,571	3,664	3,688	3,563	3,516	3,492	3,655	3,818	4,059

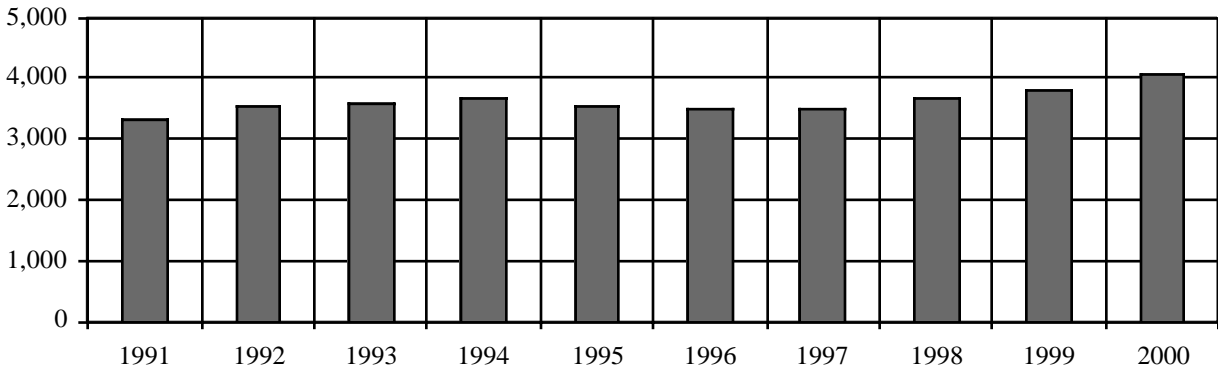
*Management was a part of the Ivan Allen College until 1998.

ENROLLMENT

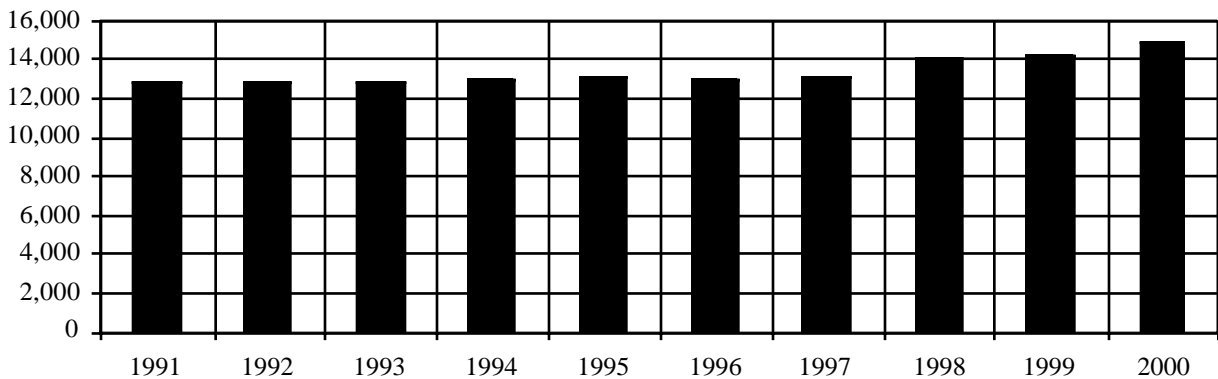
**Fig. 2.6 Undergraduate Enrollment for the Ten Year Period
Fall Terms 1991 - 2000**



**Fig. 2.7 Graduate Enrollment for the Ten Year Period
Fall Terms 1991 - 2000**



**Fig. 2.8 Institute Enrollment for the Ten Year Period
Fall Terms 1991 - 2000**



ENROLLMENT

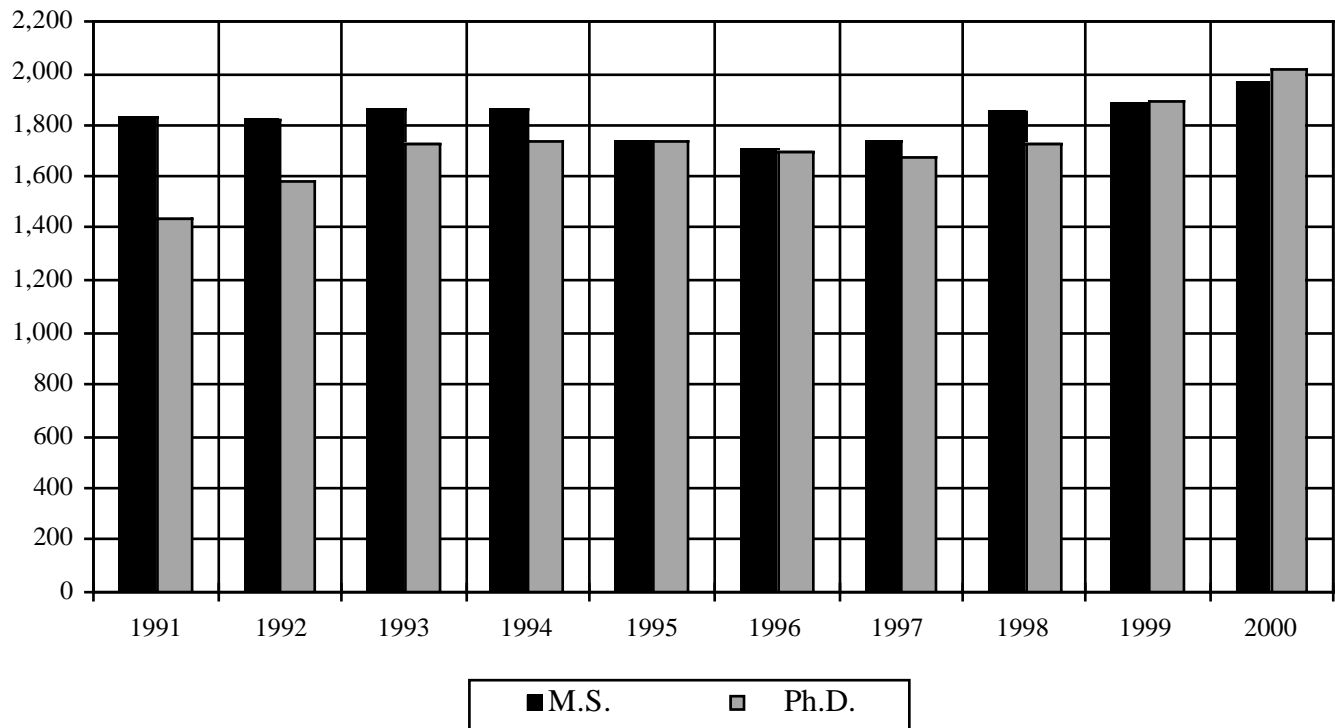
Table 2.21 Graduate Enrollment by Degree Program, Fall Terms 1991-2000

Fall	Architecture		Computing		Engineering		Ivan Allen		Management*		Sciences		Total	
	M.S.	Ph.D.	M.S.	Ph.D.	M.S.	Ph.D.	M.S.	Ph.D.	M.S.	Ph.D.	M.S.	Ph.D.	M.S.	Ph.D.
1991	211	28	106	120	1,165	908	236	31	–	–	105	359	1,823	1,446
1992	143	33	108	126	1,217	995	248	34	–	–	105	395	1,821	1,583
1993	254	36	95	128	1,160	1,096	254	36	–	–	93	430	1,856	1,726
1994	245	37	85	134	1,165	1,115	274	33	–	–	86	413	1,855	1,732
1995	226	29	76	120	1,066	1,127	302	38	–	–	66	417	1,736	1,731
1996	207	32	69	117	1,030	1,115	342	39	–	–	62	388	1,710	1,691
1997	191	32	59	129	1,029	1,117	367	39	–	–	87	361	1,733	1,678
1998	197	34	81	147	1,114	1,133	122	18	257	28	80	367	1,851	1,727
1999	206	38	87	177	1,112	1,232	123	26	277	30	69	381	1,874	1,884
2000	220	45	101	191	1,176	1,310	137	52	260	25	60	395	1,954	2,018

*DuPree College of Management was included in the Ivan Allen College until 1998.

Note: Includes both full-time and part-time Ph.D. and M.S. students; does not include special students.

**Fig. 2.9 Graduate Enrollment by Degree Program
Fall Terms 1991 - 2000**



DISTRIBUTION OF GRADES

Table 2.22 Student Grades by College and Percent, Fall Semester 2000

	A	B	C	D	F	S*	U*	I*	W*	V*	Average Grade
College of Architecture											
Lower Division	59.0	26.5	6.5	1.8	1.7	0.9	0.0	0.4	3.1	0.0	3.5
Upper Division	57.2	29.0	6.1	1.1	1.1	0.2	0.0	1.0	4.3	0.1	3.5
Graduate Division	52.4	25.4	2.7	0.3	0.5	12.5	0.1	2.3	3.2	0.5	3.6
College Total	56.9	27.4	5.6	1.2	1.2	2.9	0.0	1.1	3.6	0.1	3.5
College of Computing											
Lower Division	22.4	31.3	22.4	9.2	5.7	0.7	0.4	0.4	7.6	0.0	2.6
Upper Division	46.0	26.3	14.0	3.9	1.7	0.9	0.1	0.7	5.4	1.0	3.2
Graduate Division	36.9	12.7	3.1	0.2	0.2	24.7	0.2	0.3	4.4	17.3	3.6
College Total	32.2	25.7	15.7	5.7	3.3	6.2	0.2	0.5	6.3	4.2	2.9
College of Engineering											
Lower Division	28.0	32.5	20.5	6.0	4.5	0.6	0.0	0.4	7.5	0.0	2.8
Upper Division	34.8	33.2	19.4	4.4	2.5	0.4	0.0	0.6	4.4	0.3	3.0
Graduate Division	32.5	16.6	2.6	0.3	0.2	28.6	0.3	4.8	2.9	11.2	3.6
College Total	32.5	27.3	13.8	3.3	2.2	10.1	0.1	2.0	4.6	4.0	3.1
Ivan Allen College											
Lower Division	30.0	36.5	15.6	3.6	2.4	2.4	0.1	0.6	5.0	0.3	3.0
Upper Division	43.8	33.2	9.7	2.0	1.9	2.7	0.0	0.7	5.8	0.1	3.3
Graduate Division	59.6	17.9	2.4	0.3	0.0	5.0	0.4	3.1	2.7	8.5	3.7
College Total	35.5	34.4	13.2	3.0	2.1	2.7	0.1	0.8	5.0	0.8	3.1
College of Management											
Lower Division	23.4	32.0	27.8	9.5	2.5	0.4	0.0	0.3	4.1	0.0	2.7
Upper Division	38.0	37.4	14.2	2.3	1.4	1.2	0.0	0.5	4.8	0.2	3.2
Graduate Division	61.4	27.4	2.9	0.1	0.1	1.5	0.0	1.1	2.1	3.5	3.6
College Total	41.5	33.4	14.0	3.3	1.2	1.1	0.0	0.6	3.9	1.1	3.2
College of Sciences											
Lower Division	32.0	27.0	19.6	8.4	5.7	1.2	0.0	0.4	5.7	0.0	2.8
Upper Division	31.6	27.4	17.9	7.0	4.8	2.3	0.1	0.8	7.9	0.2	2.8
Graduate Division	28.9	13.1	2.7	0.5	0.7	32.7	0.3	1.5	3.9	15.7	3.5
College Total	31.6	25.5	17.4	7.3	5.0	4.9	0.1	0.6	5.8	1.8	2.8
Institute											
Lower Division	30.6	30.1	18.5	6.6	4.4	1.3	0.1	0.4	5.7	1.3	2.8
Upper Division	38.0	31.6	15.3	3.7	2.3	1.0	0.0	0.6	5.1	2.3	3.1
Graduate Division	37.9	17.4	2.6	0.3	0.3	22.9	0.3	3.1	3.1	12.1	3.6
Institute Total	34.5	27.9	14.2	4.4	2.9	5.7	0.1	1.1	5.0	3.9	3.0

*S= Satisfactory Completion of Pass/Fail

*U= Unsatisfactory Completion of Pass/Fail

*I= Incomplete

*W= Withdrawn

*V= Audit





CREDIT HOURS

Table 2.23 Student Semester Credit Hours by College and Division, Fiscal Years 1996 - 2000

	1996*	1997*	1998*	1999	2000
College of Architecture					
Lower Level	6,331	6,334	5,781	6,541	6,367
Upper Level	7,468	8,342	8,413	7,769	8,268
Graduate	5,568	5,060	4,801	5,232	5,176
College Total	19,367	19,736	18,995	19,542	19,811
College of Computing					
Lower Level	10,310	12,845	14,651	18,780	20,655
Upper Level	5,494	5,845	7,584	10,741	9,513
Graduate	5,909	6,618	7,623	8,843	9,539
College Total	21,713	25,308	29,858	38,364	39,707
College of Engineering					
Lower Level	13,422	12,431	12,551	13,741	24,418
Upper Level	69,237	63,867	63,476	64,921	53,223
Graduate	65,686	63,456	71,000	74,750	76,618
College Total	148,345	139,754	147,027	153,412	154,259
Ivan Allen College					
Lower Level	34,327	33,005	34,908	40,277	42,978
Upper Level	20,040	18,435	19,243	20,388	15,820
Graduate	2,987	2,924	3,254	3,177	3,955
College Total	57,354	54,364	57,405	63,842	62,753
College of Management					
Lower Level	5,299	5,196	5,612	6,720	7,181
Upper Level	10,561	10,163	10,878	13,689	16,288
Graduate	7,300	7,674	7,842	8,778	9,726
College Total	23,160	23,033	24,332	29,187	33,195
College of Sciences					
Lower Level	76,950	75,111	74,555	81,417	85,229
Upper Level	34,764	33,427	32,541	31,408	19,004
Graduate	19,288	17,109	17,805	17,447	17,605
College Total	131,002	125,647	124,901	130,272	121,838
Institute					
Lower Level	146,638	144,922	148,059	167,477	186,828
Upper Level	147,563	140,078	142,135	148,915	122,117
Graduate	106,738	102,841	112,325	118,227	122,619
Institute Total	400,939	387,841	402,519	434,619	431,564

* Credit Hours converted from Quarter Credit Hours to Semester Credit Hours.

UNDERGRADUATE COOPERATIVE PROGRAM

Since 1912, Georgia Tech has offered a five-year cooperative program to those students who wish to combine career-related experience with classroom studies. The program is the fourth oldest of its kind in the world and the largest totally optional co-op program in the country. Students who enroll in this program alternate between industrial assignments and classroom studies on a semester basis, completing the same course work on the campus that is completed by regular four-year students. Graduates of the program are awarded a degree in their field with the designation "Cooperative Plan." By completing work assignments abroad and exhibiting proficiency in a foreign language, students may earn the "International Cooperative Plan" designation. This program is accredited by the Accreditation Council for Cooperative Education.

Professional work experience gives cooperative students an opportunity to develop their career interests, become more confident in their career choices, and gives them an opportunity to develop human relations skills through their work experiences. They are paid for their work in industry and are able to save a portion of their salaries, which can be applied toward educational expenses. Approximately 700 employers, throughout the U.S. and internationally, participate in the program. With average starting salaries of nearly \$12 per hour for students, the aggregate amount earned last year by all co-ops was about \$23 million.

Table 2.24 Undergraduate Cooperative Program Enrollment by Major, Fiscal Years 1991-2000

Major	1991	1992	1993	1994	1995	1996	1997	1998	1999	2000
Aerospace Engineering	111	128	123	113	121	122	148	173	195	195
Biology	24	32	35	32	58	39	35	32	36	48
Building Construction	0	0	0	0	0	0	3	4	9	24
Ceramic Engineering	4	5	7	7	8	5	1	0	0	0
Chemical Engineering	232	295	354	343	445	414	400	311	293	258
Chemistry	24	21	28	31	28	31	28	23	26	29
Civil Engineering	208	203	238	280	318	319	286	242	197	195
Computer Engineering	97	101	133	164	247	302	331	370	382	360
Computer Science	149	151	180	204	289	317	355	396	456	509
Earth and Atmospheric Sciences	0	0	2	8	6	7	10	8	3	5
Economics	5	6	6	8	6	4	3	6	7	13
Electrical Engineering	672	625	609	609	617	526	473	433	386	328
Engineering Science and Mechanics	15	10	14	4	4	1	0	0	0	0
Industrial Design	17	29	30	36	39	52	45	45	33	34
Industrial Engineering	338	320	309	323	368	439	451	459	436	439
International Affairs	0	15	22	27	30	29	34	25	33	43
Management	183	166	143	118	131	171	205	222	201	206
Management Science	9	11	13	10	11	10	17	3	2	0
Materials Engineering	32	29	27	23	20	22	25	17	13	18
Mathematics	12	10	10	11	13	10	13	12	13	14
Mechanical Engineering	610	617	511	571	637	613	641	587	590	621
Nuclear and Radiological Engineering	22	21	17	12	13	11	12	7	13	12
Physics	32	33	30	21	21	17	15	15	18	16
Polymer and Textile Chemistry	9	8	16	16	20	19	16	16	16	9
Science, Technology and Culture	0	0	0	0	4	5	9	11	7	12
Textiles	7	5	6	8	10	11	6	11	5	3
Textile Engineering	41	56	61	62	71	49	50	38	32	36
Undecided Engineering College	75	96	189	124	176	134	124	149	128	67
Undecided Ivan Allen College	10	15	8	5	13	15	4	11	4	4
Undecided Sciences College	0	0	11	17	9	11	6	12	2	7
Total	2,938	3,008	3,132	3,187	3,733	3,705	3,746	3,638	3,536	3,505

Table 2.25 Undergraduate Cooperative Program Summary, Fiscal Years 1991-2000

	1991	1992	1993	1994	1995	1996	1997	1998	1999	2000
Cumulative Enrollment	3,568	3,571	3,648	3,683	3,905	4,189	4,187	4,185	3,949	3,811
Student Graduates	360	416	468	409	355	427	349	400	420	368



GRADUATE COOPERATIVE PROGRAM

The Graduate Cooperative Program was established in December 1983 and is currently the largest such program in the U.S. for science and engineering. One thousand fifty-four (1,054) students (134 in 1999-2000) have received their graduate degrees with Graduate Co-op Program certificates. Enrollment in the program was 420 during 1999-2000, including 151 doctoral students. Summary statistics for the program are provided in the table.

Table 2.26 Graduate Cooperative Program Enrollment by Major, Fiscal Years 1991-2000

Major	1991	1992	1993	1994	1995	1996	1997	1998	1999	2000
Aerospace Engineering	27	24	25	18	20	16	8	15	14	13
Architecture	4	12	13	24	21	33	35	27	41	45
Biology	1	2	3	4	4	2	2	0	2	2
Chemical Engineering	3	1	5	4	2	12	8	13	8	7
Chemistry	2	1	5	6	5	3	4	6	4	3
Civil Engineering	41	49	31	21	16	15	14	12	25	27
City Planning	4	7	19	4	17	32	34	30	33	35
Earth and Atmospheric Sciences	10	10	5	2	3	2	1	3	2	2
Electrical Engineering	126	147	155	148	145	121	124	125	110	117
Engineering Science and Mechanics	10	13	10	1	1	0	2	0	4	3
Environmental Engineering	0	0	0	11	6	3	2	4	3	8
Health Physics	0	0	0	2	2	2	0	1	1	1
Information and Computer Sciences	51	42	55	50	48	39	40	38	41	47
Information Design and Technology	—	—	—	—	—	1	0	1	3	2
Industrial and Systems Engineering	75	84	68	43	36	35	41	37	33	34
Mechanical Engineering	47	66	79	65	55	44	49	50	42	44
Nuclear Engineering	2	4	4	2	2	2	0	1	1	0
Materials Engineering	3	3	8	4	5	7	5	5	6	5
Mathematics	5	3	5	8	8	4	3	4	3	2
Metallurgical Engineering	0	0	0	2	1	1	1	0	0	0
Management	38	33	28	27	20	12	10	18	15	16
Physics	12	15	16	9	6	3	2	1	1	2
Public Policy	—	—	—	—	—	1	1	2	2	1
Psychology	12	15	19	14	8	5	3	3	3	5
Textiles	8	6	8	3	4	5	3	6	4	3
Total	481	537	561	472	435	400	392	402	401	424

Table 2.27 Graduate Cooperative Program Summary, Fiscal Years 1991-2000

	1991	1992	1993	1994	1995	1996	1997	1998	1999	2000
Applicants	265	375	391	344	302	298	288	292	297	300
Admissions	249	360	380	332	288	290	281	286	290	294
Placements	253	242	317	256	216	220	215	218	216	220
Companies for above placements	141	135	148	150	126	128	130	129	125	130

STUDY ABROAD PROGRAM

Most Georgia Tech students who go abroad do so as part of a Georgia Tech-sponsored study abroad or exchange program. Study abroad programs, which take place primarily during the summer, offer Georgia Tech courses that are taught primarily by Georgia Tech professors. Study abroad programs take students to places ranging from Australia and Kenya to France and Argentina. In 1997, Georgia Tech began actively managing reciprocal exchange programs that allow students to complete a portion of their academic programs in top-notch foreign universities. Exchange students enroll in the foreign university as visiting students and take classes, which are sometimes taught in a foreign language, with students from the host country.

Table 2.28 Georgia Tech Students Abroad by Year, 1993-1994 through 1999-2000*

Year	Number
1993-1994	191
1994-1995	241
1995-1996	291
1996-1997	333
1997-1998	485
1998-1999	506
1999-2000	521

* Year is equal to Fall Quarter/Semester through Summer Term of the following year.

Table 2.29 Georgia Tech Students Abroad by Discipline, 1997-1998 through 1999-2000

Program Title	Number of Participants		
	1997-1998	1998-1999	1999-2000
Argentina Summer Program	n/a	17	n/a
Brussels Summer Program	20	17	18
Chemical Engineering in London	30	10	11
College of Architecture Senior Year in Paris	24	21	17
College of Architecture Summer Study in Rome	23	20	25
College of Computing Summer Program in Barcelona	n/a	29	n/a
Costa Rica Summer Program	n/a	n/a	23
Exchange Programs	16	27	37
Field Work in Animal Behavior	8	6	7
Georgia Tech Lorraine Summer Program for Undergraduates	31	64	49
Industrial Design in the French Context	15	n/a	n/a
Languages for Business and Technology	26	15	51
Modern Architecture and the Modern City	11	n/a	14
Non-Georgia Tech Programs	17	8	18
Oxford Summer Program	192	175	155
Winter Program Down Under	47	90	89
Work Abroad/International Co-op	8	7	7
Total	468	506	521





DEGREES CONFERRED

Table 2.30 Degrees Conferred by College, Ethnicity, and Gender, Summer Term 1999 - Spring Semester 2000

College	Asian		Black		Hispanic		Native American		White		Multiracial		International		Total
	M	F	M	F	M	F	M	F	M	F	M	F	M	F	
Bachelor's															
Architecture	5	3	2	1	1	0	1	0	54	36	1	0	2	1	107
Computing	29	10	11	3	2	1	2	0	126	14	2	2	2	3	207
Engineering	90	28	87	59	26	6	2	0	654	210	6	4	59	12	1,243
Ivan Allen	3	3	1	0	2	0	0	0	46	35	0	0	0	0	90
Management	11	11	6	7	3	3	1	0	120	92	1	0	3	1	259
Sciences	13	6	0	7	3	2	0	0	42	45	0	2	1	0	121
Total	151	61	107	77	37	12	6	0	1,042	432	10	8	67	17	2,027
Master's															
Architecture	1	3	6	1	2	0	0		41	19	0	0	6	4	83
Computing	2	1	2	2	1	1	0	0	12	5	0	0	22	4	52
Engineering	30	12	25	15	9	3	1	0	220	59	0	0	204	36	614
Ivan Allen	2	0	1	2	1	3	0	0	18	11	1	0	1	5	45
Management	3	1	6	3	0	1	0	0	78	27	0	0	23	10	152
Sciences	1	2	1	0	1	0	0	0	17	20	0	0	12	6	60
Total	39	19	41	23	14	8	1	0	386	141	1	0	268	65	1,006
Doctoral															
Architecture	1	0	0	0	0	0	0	0	1	0	0	0	0	0	2
Computing	0	0	0	0	0	0	0	0	4	2	0	0	7	1	14
Engineering	12	0	7	4	2	2	0	0	51	14	0	0	60	8	160
Ivan Allen	0	0	0	0	0	0	0	0	0	0	0	0	0	0	0
Management	0	0	1	0	0	0	0	0	0	1	0	0	1	0	3
Sciences	1	3	2	1	0	0	0	0	17	13	0	0	7	7	51
Total	14	3	10	5	2	2	0	0	73	30	0	0	75	16	230
Institute															
Institute	204	83	158	105	53	22	7	0	1,501	603	11	8	410	98	3,263

DEGREES CONFERRED

Table 2.31 Degrees Conferred by State of Residence, Summer Term 1999 - Spring Semester 2000

State	Bachelor's	Master's	Ph.D.	State	Bachelor's	Master's	Ph.D.
Alabama	23	13	4	Nevada	1	2	0
Alaska	1	2	0	New Hampshire	2	3	0
Arizona	4	3	1	New Jersey	28	11	3
Arkansas	4	2	0	New Mexico	0	3	1
California	9	20	8	New York	21	22	3
Colorado	2	2	0	North Carolina	30	29	5
Connecticut	12	0	1	North Dakota	0	2	1
Delaware	0	0	0	Ohio	11	6	4
District of Columbia	1	5	1	Oklahoma	0	4	0
Florida	122	56	7	Oregon	3	1	0
Georgia	1,389	302	54	Pennsylvania	21	17	5
Hawaii	0	0	0	Rhode Island	2	0	0
Idaho	0	1	0	South Carolina	44	12	3
Illinois	9	4	2	South Dakota	0	0	0
Indiana	2	9	1	Tennessee	26	19	7
Iowa	2	2	0	Texas	26	18	4
Kansas	1	2	0	Utah	0	4	2
Kentucky	12	0	1	Vermont	1	3	1
Louisiana	17	6	1	Virginia	37	21	6
Maine	3	0	0	Washington	3	3	2
Maryland	36	12	2	West Virginia	1	3	1
Massachusetts	13	9	1	Wisconsin	1	5	0
Michigan	5	10	1	Wyoming	0	0	0
Minnesota	1	3	1				
Mississippi	5	4	0	Other U.S. Territories & Possessions			
Missouri	4	9	2	Puerto Rico	7	6	1
Montana	1	0	1				
Nebraska	0	2	1	Total	1,943	672	139





DEGREES CONFERRED

Table 2.32 Degrees Conferred by Georgia County of Residence, Summer Term 1999 - Spring Semester 2000

County	Bachelor's	Master's	Ph.D.	County	Bachelor's	Master's	Ph.D.	County	Bachelor's	Master's	Ph.D.
Appling	1	0	0	Fannin	0	1	0	Oglethorpe	1	0	0
Atkinson	0	0	0	Fayette	54	6	0	Paulding	4	1	0
Bacon	2	0	0	Floyd	16	1	1	Peach	3	1	0
Baker	0	0	0	Forsyth	12	3	0	Pickens	2	0	0
Baldwin	0	0	0	Franklin	0	0	0	Pierce	1	0	0
Banks	1	0	0	Fulton	189	78	13	Pike	0	0	0
Barrow	6	1	0	Gilmer	2	0	0	Polk	7	1	0
Bartow	7	2	0	Glascocock	0	0	0	Pulaski	0	0	0
Ben Hill	2	0	0	Glynn	11	2	1	Putnam	1	0	0
Berrien	0	0	0	Gordon	9	1	0	Quitman	0	0	0
Bibb	22	6	0	Grady	4	0	0	Rabun	3	0	0
Bleckley	1	0	0	Greene	1	0	0	Randolph	1	0	0
Brantley	0	0	0	Gwinnett	199	30	5	Richmond	15	4	0
Brooks	1	0	0	Habersham	5	0	0	Rockdale	18	2	1
Bryan	2	0	0	Hall	5	2	1	Schley	0	0	0
Bulloch	4	1	0	Hancock	0	0	0	Screven	3	0	0
Burke	2	1	0	Haralson	2	0	0	Seminole	0	0	0
Butts	2	0	0	Harris	3	0	0	Spalding	4	0	0
Calhoun	1	0	0	Hart	2	0	0	Stephens	2	0	0
Camden	4	0	0	Heard	1	0	0	Stewart	1	0	0
Candler	1	0	0	Henry	11	3	0	Sumter	6	0	1
Carroll	11	1	2	Houston	18	5	0	Talbot	1	0	0
Catoosa	6	0	0	Irwin	0	0	0	Taliaferro	0	0	0
Charlton	0	0	0	Jackson	1	1	0	Tattnall	2	0	0
Chatham	31	3	1	Jasper	0	0	0	Taylor	0	0	0
Chattahoochee	2	0	0	Jeff Davis	1	0	0	Telfair	1	0	0
Chattooga	0	0	0	Jefferson	1	1	0	Terrell	0	0	0
Cherokee	17	6	0	Jenkins	0	0	0	Thomas	6	1	0
Clarke	7	1	0	Johnson	0	0	0	Tift	7	0	0
Clay	0	0	0	Jones	1	0	0	Toombs	3	1	0
Clayton	39	5	0	Lamar	1	0	0	Towns	0	2	0
Clinch	0	0	0	Lanier	0	0	0	Treutlen	0	0	0
Cobb	184	43	6	Laurens	5	0	0	Troup	1	0	0
Coffee	0	0	0	Lee	4	0	0	Turner	0	0	0
Colquitt	2	0	0	Liberty	5	0	0	Twiggs	0	0	0
Columbia	38	3	0	Lincoln	0	0	0	Union	1	0	0
Cook	1	0	0	Long	0	0	0	Upson	3	1	0
Coweta	5	3	0	Lowndes	14	2	0	Walker	6	0	0
Crawford	0	0	0	Lumpkin	1	0	0	Walton	5	0	0
Crisp	6	0	0	Macon	1	0	0	Ware	1	0	0
Dade	0	0	0	Madison	0	0	0	Warren	1	1	0
Dawson	2	0	0	Marion	0	0	0	Washington	1	0	0
Decatur	1	1	0	McDuffie	1	0	0	Wayne	4	0	0
DeKalb	161	43	14	McIntosh	1	0	0	Webster	1	0	0
Dodge	0	0	0	Meriwether	1	1	0	Wheeler	0	0	0
Dooly	0	0	0	Miller	0	0	0	White	2	0	0
Dougherty	10	3	0	Mitchell	2	0	0	Whitfield	7	1	0
Douglas	10	1	2	Monroe	3	0	0	Wilcox	0	0	0
Early	0	0	0	Montgomery	0	0	0	Wilkes	0	0	0
Echols	0	0	0	Morgan	3	0	0	Wilkinson	1	0	0
Effingham	2	0	0	Murray	1	0	0	Worth	1	0	0
Elbert	0	1	0	Muscogee	25	0	0	Unknown*	23	21	6
Emanuel	2	0	0	Newton	11	2	0				
Evans	1	0	0	Oconee	5	1	0				
								Total	1,389	302	54

* Unknown = In-state students who gave no county designation.

DEGREES CONFERRED

Table 2.33 Degrees Conferred by Country of Residence, Summer Term 1999 - Spring Semester 2000

Country	Bachelor's	Master's	Ph.D.	Country	Bachelor's	Master's	Ph.D.
Argentina	0	2	1	Lebanon	1	1	0
Bangladesh	2	1	0	Macedonia	0	1	0
Brazil	3	2	0	Malaysia	2	3	0
British Virgin Islands	1	0	0	Mexico	0	15	0
Cameroon	0	0	1	Morocco	1	0	0
Canada	1	3	2	Nigeria	1	3	0
China	0	47	30	Norway	0	0	1
Colombia	3	5	0	Pakistan	1	8	2
Costa Rica	1	2	1	Panama	2	2	1
Croatia	0	1	0	Peru	1	2	0
Czech Republic	0	0	1	Philippines	0	2	0
Denmark	0	1	0	Romania	0	0	6
Ecuador	2	2	0	Russia	0	3	1
Egypt	0	0	1	Sierra Leone	1	0	0
France	1	50	2	Singapore	5	1	1
Germany	1	10	1	Slovenia	0	0	1
Germany (Berlin)	0	1	0	South Africa	0	1	0
Germany, Federal Republic of	0	11	2	Spain	0	3	0
Ghana	5	1	1	Sri Lanka	0	1	0
Greece	0	1	1	Switzerland	0	2	0
Guatemala	0	1	0	Syria	0	1	0
Haiti	0	1	0	Taiwan	2	10	5
Honduras	3	0	0	Tanzania	2	0	0
Hong Kong	2	0	0	Thailand	0	11	1
India	13	46	12	Trinidad and Tobago	2	0	0
Indonesia	4	7	0	Turkey	2	20	2
Iran	1	2	1	Ukraine	2	0	0
Ireland	0	1	0	United Kingdom/Great Britain	4	1	0
Italy	1	1	1	Uzbekistan	1	0	0
Jamaica	1	2	0	Venezuela	1	4	3
Japan	1	5	0	Yugoslavia	1	0	0
Jordan	0	1	0				
Korea (South)	6	32	9	Total	84	334	91





DEGREES CONFERRED

Table 2.34 Bachelor's Degrees Conferred by College, Fiscal Years 1991-2000

College	1991	1992	1993	1994	1995	1996	1997	1998	1999	2000
Architecture	66	49	125	69	69	63	50	41	52	49
Building Construction	25	23	28	31	34	32	21	32	32	26
Industrial Design	12	12	11	23	24	25	20	32	35	32
Total Architecture	103	84	164	123	127	120	91	105	119	107
Computer Science	92	97	87	70	74	89	79	102	158	207
Total Computing	92	97	87	70	74	89	79	102	158	207
Aerospace	72	64	63	52	37	35	35	32	50	29
Ceramic	7	1	1	4	3	3	1	—	—	—
Chemical	58	72	84	80	137	164	148	129	142	143
Civil	98	116	125	145	165	172	176	159	168	148
Computer	16	14	19	39	45	59	58	82	106	98
Electrical	297	302	333	304	270	305	259	239	235	223
Engineering Science and Mechanics	11	7	12	10	4	3	—	—	—	—
Industrial and Systems	280	254	256	215	222	289	264	279	302	289
Materials	10	12	16	25	21	19	16	25	19	15
Mechanical	259	331	282	309	309	301	238	274	241	269
Nuclear and Radiological	14	7	7	12	8	13	10	9	0	5
Textiles	7	8	12	10	8	11	4	6	7	—
Polymer and Textile Chemistry	3	5	6	5	5	8	7	5	7	6
Textile Engineering	13	14	19	16	23	31	14	20	16	6
Textile Enterprise Management	—	—	—	—	—	—	—	—	—	6
Textile and Fiber Engineering	—	—	—	—	—	—	—	—	—	6
Total Engineering	1,145	1,207	1,235	1,226	1,257	1,413	1,230	1,259	1,293	1,243
Economics	13	16	7	6	7	14	13	19	15	8
History, Technology, and Society	1	1	2	11	11	12	10	12	11	14
International Affairs	0	7	37	37	42	44	46	29	38	50
Management	330	336	300	285	174	218	175	182	**	**
Management Science	11	8	13	5	10	16	9	6	**	**
Science, Technology, and Culture	0	1	3	3	10	7	5	14	14	18
Total Ivan Allen	355	369	362	347	254	311	258	262	78	90
Management	**	**	**	**	**	**	**	**	212	252
Management Science	**	**	**	**	**	**	**	**	10	7
Total Management	**	**	**	**	**	**	**	**	222	259
Applied Physics	17	14	8	13	9	8	3	0	1	1
Biology	31	45	46	33	53	76	45	76	61	50
Chemistry	29	22	29	24	30	43	31	34	36	25
Earth and Atmospheric Sciences	0	0	0	1	2	7	14	13	6	10
Mathematics	17	18	13	13	13	15	15	16	14	6
Physics	28	17	24	27	28	31	20	25	24	11
Psychology	12	11	7	8	20	9	8	20	16	18
Total Sciences	134	127	127	119	155	189	136	184	158	121
Total Bachelor's Degrees	1,829	1,884	1,975	1,885	1,867	2,122	1,794	1,912	2,028	2,027

**Management was included in the Ivan Allen College until 1998.

DEGREES CONFERRED

Table 2.35 Master's Degrees Conferred by College, Fiscal Years 1991-2000

College	1991	1992	1993	1994	1995	1996	1997	1998	1999	2000
Architecture	46	30	47	42	51	73	44	56	46	36
City Planning	22	21	25	39	44	35	39	30	28	47
Total Architecture	68	51	72	81	95	108	83	86	74	83
Bioengineering	—	—	—	—	—	—	—	1	0	0
Computer Science	57	53	69	65	64	50	46	30	55	50
Human - Computer Interaction	—	—	—	—	—	—	—	—	5	2
Total Computing	57	53	69	65	64	50	46	31	60	52
Aerospace	57	49	57	70	57	54	38	59	38	53
Bioengineering	—	—	—	—	1	0	0	1	2	4
Ceramic	4	3	7	6	6	8	7	1	—	—
Chemical	7	8	9	13	11	18	14	13	9	7
Civil	68	53	101	90	108	109	98	97	71	84
Electrical	231	203	224	252	219	216	172	186	189	42
Electrical and Computer	—	—	—	—	—	—	—	—	—	180
Engineering Science and Mechanics	5	4	5	6	3	1	4	1	1	2
Environmental	6	14	25	34	16	27	12	39	29	25
Health Physics	14	14	25	27	23	14	16	12	15	5
Health Systems	7	10	19	11	16	18	9	8	9	10
Industrial	51	78	88	66	58	64	63	51	71	75
Materials Science and Engineering	—	—	—	1	0	2	2	8	22	14
Mechanical	66	86	105	85	75	75	71	96	114	77
Metallurgical	5	3	7	8	5	4	7	0	—	—
Nuclear	8	8	4	3	11	2	4	4	1	1
Operations Research	22	23	24	25	22	9	17	13	20	25
Polymers	2	2	1	4	5	12	9	4	12	1
Statistics	2	6	6	5	9	4	2	1	2	2
Textiles	1	5	7	3	0	2	0	1	2	—
Textile and Fiber Engineering	6	3	9	8	9	7	11	7	3	5
Textile and Fiber Chemistry	—	—	—	4	0	4	2	2	4	2
Total Engineering	562	572	723	721	654	650	558	604	614	614
Economics	1	1	6	4	6	5	5	3	0	2
History of Technology	—	—	—	1	2	0	1	1	0	1
Human - Computer Interaction	—	—	—	—	—	—	—	—	3	1
Information, Design, and Tech.	—	—	—	—	10	13	10	15	11	15
International Affairs	—	—	—	—	—	—	—	15	13	14
Management	69	81	100	91	90	102	104	98	**	**
Management of Technology	—	—	—	—	—	—	20	32	**	**
Public Policy	2	10	13	6	14	11	16	13	17	11
Statistics	—	—	—	—	—	2	0	0	0	0
Technology and Science Policy	—	—	—	—	—	—	—	—	—	1
Total Ivan Allen	72	92	119	102	122	133	156	177	44	45
Management	**	**	**	**	**	**	**	**	84	103
Management of Technology	**	**	**	**	**	**	**	**	43	49
Total Management	**	**	**	**	**	**	**	**	127	152
Applied Physics	4	4	4	6	3	1	0	3	0	1
Biology	3	6	0	9	6	7	1	4	5	9
Chemistry	7	9	13	12	6	22	12	15	15	10
Earth and Atmospheric Sciences	8	9	9	17	6	9	10	6	6	13
Human - Computer Interaction	—	—	—	—	—	—	—	—	1	0
Mathematics	13	5	12	12	14	16	8	5	12	9
Physics	10	15	18	15	13	18	7	7	7	6
Psychology	13	8	7	15	7	14	11	12	10	8
Statistics	1	0	2	6	3	5	3	1	3	4
Technology and Science Policy	4	—	—	—	—	—	—	—	—	—
Total Sciences	63	56	65	92	58	92	52	53	59	60
Total Master's Degrees	822	824	1,048	1,061	993	1,033	895	951	978	1,006

**Management was included in the Ivan Allen College until 1998.





DEGREES CONFERRED

Table 2.36 Doctoral Degrees Conferred by College, Fiscal Years 1991-2000

College	1991	1992	1993	1994	1995	1996	1997	1998	1999	2000
Architecture	2	1	7	6	4	5	4	1	6	2
Total Architecture	2	1	7	6	4	5	4	1	6	2
Algorithms, Combinatorics, and Opt.	—	—	—	—	—	0	0	0	1	0
Computer Science	12	8	15	9	10	26	13	17	9	14
Total Computing	12	8	15	9	10	26	13	17	10	14
Aerospace	15	20	15	17	12	21	16	24	18	11
Bioengineering	—	—	—	—	—	—	—	2	1	1
Ceramic	3	1	1	2	3	1	1	1	1	—
Chemical	9	8	12	8	4	18	13	15	17	11
Civil	8	3	11	12	15	6	11	19	11	19
Electrical	33	48	31	46	39	52	54	60	58	10
Electrical and Computer	—	—	—	—	—	—	—	—	—	39
Engineering Science and Mechanics	1	2	3	1	0	3	1	0	1	1
Environmental	0	0	0	1	1	2	1	6	3	7
Industrial	7	16	20	12	14	24	14	11	16	10
Materials Science and Engineering	—	—	—	—	—	—	—	1	8	9
Metallurgical	4	3	3	5	3	8	8	3	—	—
Mechanical	16	23	24	29	21	25	22	28	27	32
Nuclear	7	3	3	6	4	8	7	8	0	5
Textile Engineering	1	2	1	1	4	3	4	0	2	5
Total Engineering	104	129	124	140	120	171	152	178	163	160
History, Technology, and Society	—	—	—	—	—	1	0	0	1	0
Management	2	3	4	5	5	5	3	6	**	**
Total Ivan Allen	2	3	4	5	5	6	3	6	1	0
Management	**	**	**	**	**	**	**	**	2	3
Total Management	**	**	**	**	**	**	**	**	2	3
Algorithms, Combinatorics, and Opt.	0	0	0	0	0	0	0	0	1	3
Biology	6	3	4	7	2	6	3	4	2	5
Chemistry	8	14	17	13	13	6	13	19	15	21
Earth and Atmosphere	—	—	—	1	12	3	8	8	5	6
Geophysical Sciences	6	7	5	4	—	—	—	—	—	—
Mathematics	1	7	5	6	6	8	4	12	3	4
Physics	9	12	9	5	9	11	18	8	9	5
Psychology	6	4	6	6	8	10	6	10	11	7
Total Sciences	36	47	46	42	50	44	52	61	46	51
Total Doctoral Degrees	156	188	196	202	189	252	224	263	228	230

**Management was included in the Ivan Allen College through 1998.

Table 2.37 Total Degrees Granted through Spring Semester 2000

Degree	Number Granted
Bachelor's	84,165
Master's	25,853
Doctoral	4,085
Overall	114,103

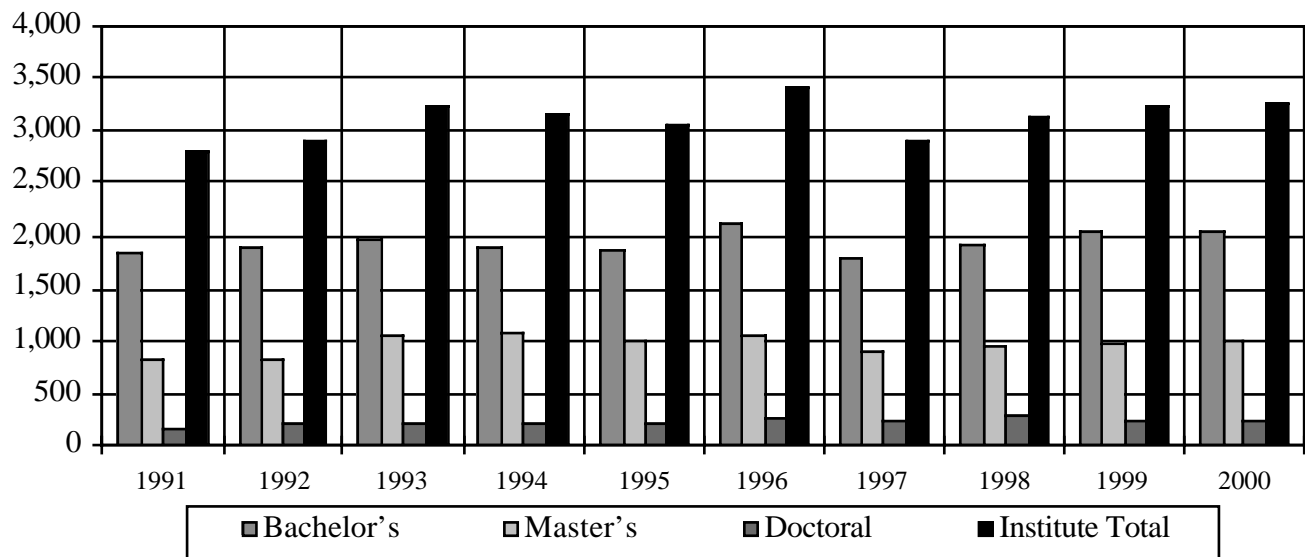
DEGREES CONFERRED

Table 2.38 Summary of Degrees Conferred, by College and Degree, Fiscal Years 1991-2000

College	1991	1992	1993	1994	1995	1996	1997	1998	1999	2000
Bachelor's	103	84	164	123	127	120	91	105	119	107
Master's	68	51	72	81	95	108	83	86	74	83
Doctoral	2	1	7	6	4	5	4	1	6	2
Total Architecture	173	136	243	210	226	233	178	192	199	192
Bachelor's	92	97	87	70	74	89	79	102	158	207
Master's	57	53	69	65	64	50	46	31	60	52
Doctoral	12	8	15	9	10	26	13	17	10	14
Total Computing	161	158	171	144	148	165	138	150	228	273
Bachelor's	1,145	1,207	1,235	1,226	1,257	1,413	1,230	1,259	1,293	1,243
Master's	562	579	723	721	654	650	558	604	614	614
Doctoral	104	129	124	140	120	171	152	178	163	160
Total Engineering	1,811	1,915	2,082	2,087	2,031	2,234	1,940	2,041	2,070	2,017
Bachelor's	355	369	362	347	254	311	258	262	78	90
Master's	72	92	119	102	122	133	156	177	44	45
Doctoral	2	3	4	5	5	6	3	6	1	0
Total Ivan Allen	429	464	485	454	381	450	417	445	123	135
Bachelor's	*	*	*	*	*	*	*	*	222	259
Master's	*	*	*	*	*	*	*	*	127	152
Doctoral	*	*	*	*	*	*	*	*	2	3
Total Management	*	*	*	*	*	*	*	*	351	414
Bachelor's	134	127	121	119	155	189	136	184	158	121
Master's	63	56	65	92	58	92	52	53	59	60
Doctoral	36	47	46	42	50	44	52	61	46	51
Total Science	233	230	232	253	263	325	240	298	263	232
Bachelor's	1,829	1,884	1,975	1,885	1,867	2,122	1,794	1,912	2,028	2,027
Master's	822	831	1,048	1,061	993	1,033	895	951	978	1,006
Doctoral	156	188	196	202	189	252	224	263	228	230
Institute Total	2,807	2,903	3,213	3,148	3,049	3,407	2,913	3,126	3,234	3,263

*Management was included in the Ivan Allen College through 1998.

Fig. 2.10 Total Degrees Conferred Fiscal Years 1991-2000





GRADUATION RATES

Table 2.39 Graduation Rates for Entering Freshmen

Entering Class Summer/Fall	Graduate by 4th Year	Graduate by 5th Year	Graduate by 6th Year	Graduate by 7th Year
1990	19%	52%	66%	69%
1991	19%	56%	68%	70%
1992	20%	56%	69%	72%
1993	20%	56%	69%	71%
1994	18%	57%	69%	
1995	21%	57%		
1996	23%			

** Note: The six year graduation rate is the official rate according to the IPEDS Graduation Rate Survey definition. Starting with 1993, cohorts include students beginning Summer or Fall who are full-time for Fall. Graduation rates published in the 1998 Fact Book were calculated using a different formula.

RETENTION RATES

Table 2.40 Retention Rates for Entering Freshmen

Entering Class Summer/Fall	Still Enrolled After 1 Year	Still Enrolled After 2 Years	Still Enrolled After 3 Years	Still Enrolled After 4 Years	Still Enrolled After 5 Years	Still Enrolled After 6 Years
1990	86%	76%	71%	70%	70%	69%
1991	86%	78%	73%	72%	71%	71%
1992	87%	78%	72%	72%	72%	71%
1993	85%	78%	74%	72%	72%	71%
1994	85%	78%	73%	73%	72%	73%
1995	85%	76%	73%	71%	71%	
1996	85%	77%	73%	72%		
1997	86%	79%	75%			
1998	86%	80%				
1999	90%					

** Note: Starting with 1993, cohorts include students beginning Summer or Fall who are full-time for Fall.

CAREER SERVICES

The Office of Career Services is located in the Bill Moore Student Success Center. The office serves the Georgia Tech community with a variety of services, including career counseling and planning, opportunities for full-time, summer intern and part-time employment. One of the primary objectives of the office is to offer career education to students and assist them in attaining career and employment goals. The center conducts workshops and seminars on a variety of career related subjects—interviewing skills, resume preparation, networking, etc. A library that includes information on specific employers, governmental services, and employment-related publications is maintained at the Career Services Office. The library also contains local and national salary data, career planning, and graduate and professional school information. In addition, the office refers resumes for employer review.

Assistance is available to employers in the planning, implementation, and administration of programs that encourage effective corporate-campus relations at Georgia Tech.

Over 800 employer visits occurred on-campus with the Career Services Office during the year. These employers represent a substantial number of the Fortune 500 corporations, as well as many state and regional organizations.

Table 2.41 Top Interviewing Companies, Fiscal Years 1998-2000

1997-98	1998-99	1999-00
Andersen Consulting	Andersen Consulting	Andersen Consulting
Ford Motor Company	Ernst & Young	Ford Motor Company
IBM	Ford Motor Company	General Motors
Intel	General Electric Company	IBM
Lucent Technologies	IBM	Intel
Manhattan Associates	Lucent Technologies	Lucent Technologies
Milliken and Company	Manhattan Associates	Microstrategy
Motorola, Inc.	Milliken and Company	Motorola
Procter & Gamble	Nortel Networks	Nortel Networks
Raytheon	Procter & Gamble	Radiant Systems

Table 2.42 Average Reported Starting Annual Salaries by College and Degree, Fiscal Year 1999-2000

College	Bachelor's	Master's	Doctoral
Architecture	\$37,022	\$42,833	N/A
Computing	\$53,937	\$57,833	N/A
Engineering	\$46,513	\$58,169	\$64,679
Ivan Allen	\$34,146	\$42,000	N/A
Dupree	\$40,485	\$75,057	N/A
Sciences	\$34,667	\$52,633	\$53,667





CAREER SERVICES

Table 2.43 Reported Starting Annual Salary Comparisons by Major and Degree, Fiscal Years 1999 and 2000

Major	Degree	1999	2000	Percent Change
Aerospace Engineering	Bachelor's	\$45,133	\$46,802	+4%
	Master's	\$57,800	\$54,500	-6%
	Doctoral	\$53,500	\$60,000	+12%
Architecture	Bachelor's	\$29,000	\$28,625	-1%
	Master's	\$36,000	\$42,500	+18%
	Doctoral	\$55,000	N/A	N/A
Applied Biology	Doctoral	N/A	\$60,000	N/A
Biology	Bachelor's	\$28,250	\$32,214	+14%
	Doctoral	N/A	\$35,000	N/A
Bioengineering	Master's	N/A	\$50,000	N/A
Building Construction	Bachelor's	\$38,143	\$44,214	+16%
Chemical Engineering	Bachelor's	\$45,083	\$46,721	+4%
	Master's	\$52,000	N/A	N/A
	Doctoral	\$70,500	\$78,667	+12%
Chemistry	Bachelor's	N/A	\$28,000	N/A
	Master's	N/A	\$59,500	N/A
	Doctoral	\$39,250	\$56,000	+43%
City Planning	Master's	\$43,667	\$42,875	-2%
Civil Engineering	Bachelor's	\$39,409	\$38,760	-2%
	Master's	\$42,580	\$44,000	+3%
	Doctoral	\$47,000	\$59,000	+26%
Computer Engineering	Bachelor's	\$49,500	\$48,992	-1%
Computer Science	Bachelor's	\$50,061	\$53,937	+8%
	Master's	\$55,643	\$60,500	+9%
	Doctoral	\$41,000	N/A	N/A
Earth and Atmospheric Sciences	Doctoral	N/A	\$54,000	N/A
Electrical Engineering	Bachelor's	\$50,377	\$47,996	-5%
	Master's	\$60,462	\$62,738	+4%
	Doctoral	N/A	\$73,063	N/A
Environmental Engineering	Master's	\$40,000	\$56,667	+42%
	Doctoral	\$45,000	\$44,000	-2%
Health Physics	Master's	N/A	\$49,500	N/A
Health Systems	Master's	N/A	\$56,200	N/A
History, Technology, and Society	Bachelor's	N/A	\$30,000	N/A
Industrial Design	Bachelor's	\$40,000	\$39,125	-2%

CAREER SERVICES

Table 2.43 Reported Starting Annual Salary Comparisons by Major and Degree, Fiscal Year 1999 and 2000 – *Continued*

Major	Degree	1999	2000	Percent Change
Industrial and Systems Engineering	Bachelor's	\$47,158	\$47,427	+1%
	Master's	\$49,000	\$58,222	+19%
	Doctoral	\$54,667	N/A	N/A
International Affairs	Bachelor's	\$33,917	\$32,925	-3%
	Master's	N/A	\$36,000	N/A
Management	Bachelor's	\$40,388	\$40,330	0%
	Master's	N/A	\$75,057	N/A
Management Science	Bachelor's	N/A	\$49,000	N/A
Materials Science and Engineering	Bachelor's	N/A	\$38,475	N/A
	Master's	N/A	\$66,900	N/A
	Doctoral	N/A	\$62,800	N/A
Mathematics	Bachelor's	N/A	\$44,500	N/A
	Master's	\$55,000	\$40,000	-27%
	Doctoral	N/A	\$43,000	N/A
Mechanical Engineering	Bachelor's	\$45,824	\$46,795	+2%
	Master's	\$52,286	\$53,600	+3%
	Doctoral	\$69,333	\$58,700	-15%
Nuclear Engineering	Bachelor's	\$27,000	N/A	N/A
	Doctoral	\$70,500	N/A	N/A
Operations Research	Master's	\$65,000	\$54,000	-17%
Polymers and Textile Chemistry	Bachelor's	\$33,000	N/A	N/A
Physics	Bachelor's	\$45,600	N/A	N/A
	Master's	N/A	\$75,000	N/A
	Doctoral	\$56,500	\$47,500	-16%
Psychology	Bachelor's	N/A	\$50,000	N/A
	Doctoral	\$31,000	\$96,000	210%
Public Policy	Master's	N/A	\$40,000	N/A
Science, Technology and Culture	Bachelor's	\$65,000	\$40,167	-38%
Statistics	Master's	\$55,000	N/A	N/A
Textile Engineering	Bachelor's	N/A	\$47,750	N/A
	Doctoral	\$69,500	\$58,500	-16%

